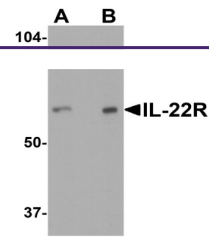
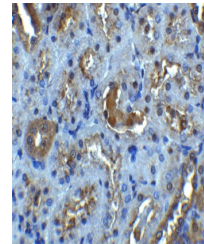

Product Datasheet

IL22RA1 Antibody (orb1239482)

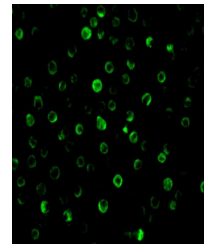
Description	IL22RA1 Antibody
Species/Host	Rabbit
Reactivity	Human, Rat
Conjugation	Unconjugated
Tested Applications	ELISA, ICC, IF, IHC-P, WB
Immunogen	IL-22 receptor antibody was raised against a synthetic peptide corresponding to amino acids near the amino terminus of human IL-22 receptor precursor. The immunogen is located within the first 50 amino acids of IL-22 Receptor.
Target	IL22RA1
Preservatives	IL-22 Receptor Antibody is supplied in PBS containing 0.02% sodium azide.
Form/Appearance	Liquid
Concentration	1 mg/mL
Storage	IL-22 Receptor antibody can be stored at 4°C for three months and -20°C, stable for up to one year. As with all antibodies care should be taken to avoid repeated freeze thaw cycles. Antibodies should not be exposed to prolonged high temperatures.
Note	For research use only
Application notes	IL-22 receptor antibody can be used for detection of IL-22 receptor by Western blot at 0.5-1 µg/mL. Antibody can also be used for immunocytochemistry starting at 10 µg/mL and immunohistochemistry starting at 5 µg/mL. For immunofluorescence start at 10 µg/mL. Antibody validated: Western Blot in human samples; Immunohistochemistry in rat samples; Immunocytochemistry in human samples and Immunofluorescence in human and rat samples. All other applications and species not yet tested.
Isotype	IgG
Clonality	Polyclonal
MW	Predicted: 63 kDa Observed: 65 kDa
Uniprot ID	Q8N6P7
NCBI	NP_067081
Dilution Range	IL-22 receptor antibody can be used for detection of



Western blot analysis of IL-22 receptor ...



Immunohistochemistry of IL-22R in rat ki...



Immunofluorescence of IL-22 receptor in ...