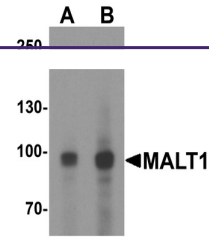


---

## Product Datasheet

### MALT1 Antibody (orb1239479)

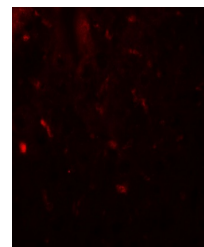
<b>Description</b>	MALT1 Antibody
<b>Species/Host</b>	Rabbit
<b>Reactivity</b>	Human, Mouse, Rat
<b>Conjugation</b>	Unconjugated
<b>Tested Applications</b>	ELISA, IF, IHC-P, WB
<b>Immunogen</b>	MALT1 antibody was raised against an 18 amino acid peptide near the carboxy terminus of human MALT1. The immunogen is located within amino acids 630 - 680 of MALT1.
<b>Target</b>	MALT1
<b>Preservatives</b>	MALT1 antibody is supplied in PBS containing 0.02% sodium azide.
<b>Form/Appearance</b>	Liquid
<b>Concentration</b>	1 mg/mL
<b>Storage</b>	MALT1 antibody can be stored at 4°C for three months and -20°C, stable for up to one year.
<b>Note</b>	For research use only
<b>Application notes</b>	MALT1 antibody can be used for detection of MALT1 by Western blot at 1 - 2 µg/mL. Antibody can also be used for immunohistochemistry starting at 5 µg/mL. For immunofluorescence start at 20 µg/mL. Antibody validated: Western Blot in mouse samples; Immunohistochemistry in human samples and Immunofluorescence in human samples. All other applications and species not yet tested.
<b>Isotype</b>	IgG
<b>Clonality</b>	Polyclonal
<b>MW</b>	Predicted: 91 kDa Observed: 96 kDa
<b>Uniprot ID</b>	<a href="#">Q9UDY8</a>
<b>NCBI</b>	<a href="#">NP_006776</a>
<b>Dilution Range</b>	MALT1 antibody can be used for detection of MALT1 by Western blot at 1 - 2 µg/mL. Antibody can also be used for immunohistochemistry starting at 5 µg/mL. For immunofluorescence start at 20 µg/mL. Antibody validated: Western Blot in mouse samples; Immunohistochemistry in human samples and Immunofluorescence in human samples. All other applications and species not yet tested.



Western blot analysis of MALT1 in EL4 ce...



Immunohistochemistry of MALT1 in human s...



Immunofluorescence of MALT1 in human spl...