
Product Datasheet

MAPKAP1 Antibody (orb1239471)

Description

MAPKAP1 Antibody

Species/Host

Rabbit

Reactivity

Human, Mouse, Rat

Conjugation

Unconjugated

Tested Applications

ELISA, IHC-P, WB

Immunogen

MAPKAP1 antibody was raised against a 18 amino acid synthetic peptide from near the center of human MAPKAP1. The immunogen is located within amino acids 340 - 390 of MAPKAP1.

Target

MAPKAP1

Preservatives

MAPKAP1 Antibody is supplied in PBS containing 0.02% sodium azide.

Form/Appearance

Liquid

Concentration

1 mg/mL

Storage

MAPKAP1 antibody can be stored at 4°C for three months and -20°C, stable for up to one year. As with all antibodies care should be taken to avoid repeated freeze thaw cycles. Antibodies should not be exposed to prolonged high temperatures.

Note

For research use only

Application notes

MAPKAP1 antibody can be used for detection of MAPKAP1 by Western blot at 1 - 2 µg/mL. Antibody can also be used for immunohistochemistry starting at 5 µg/mL. Antibody validated: Western Blot in human samples and Immunohistochemistry in human samples. All other applications and species not yet tested.

Isotype

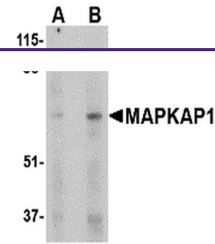
IgG

Clonality

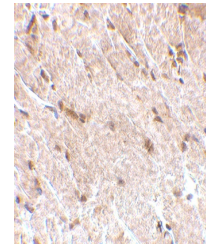
Polyclonal

Uniprot ID
[Q9BPZ7](#)
NCBI
[NP_001006618](#)
Dilution Range

MAPKAP1 antibody can be used for detection of MAPKAP1 by Western blot at 1 - 2 µg/mL. Antibody can also be used for immunohistochemistry starting at 5 µg/mL. Antibody validated: Western Blot in human samples and Immunohistochemistry in human samples. All other applications and species not yet tested.



Western blot analysis of MAPKAP1 in huma...



Immunohistochemistry of MAPKAP1 in human...