

---

## Product Datasheet

### MARCH8 Antibody (orb1239470)

**Description**

MARCH8 Antibody

**Species/Host**

Rabbit

**Reactivity**

Human, Mouse, Rat

**Conjugation**

Unconjugated

**Tested**

ELISA, ICC, WB

**Applications**
**Immunogen**

MARCH8 antibody was raised against a 17 amino acid synthetic peptide from near the carboxy terminus of human MARCH8. The immunogen is located within the last 50 amino acids of MARCH8.

**Target**

MARCH8

**Preservatives**

MARCH8 Antibody is supplied in PBS containing 0.02% sodium azide.

**Form/Appearance**

Liquid

**Concentration**

1 mg/mL

**Storage**

MARCH8 antibody can be stored at 4°C for three months and -20°C, stable for up to one year. As with all antibodies care should be taken to avoid repeated freeze thaw cycles. Antibodies should not be exposed to prolonged high temperatures.

**Note**

For research use only

**Application notes**

MARCH8 antibody can be used for detection of MARCH8 by Western blot at 0.5 - 1 µg/mL. Antibody can also be used for immunocytochemistry starting at 2.5 µg/mL. Antibody validated: Western Blot in human samples and Immunocytochemistry in human samples. All other applications and species not yet tested.

**Isotype**

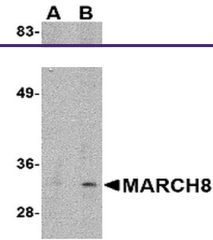
IgG

**Clonality**

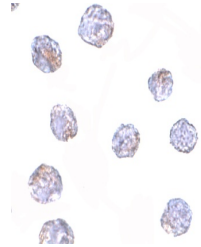
Polyclonal

**Uniprot ID**
[Q5T0T0](#)
**NCBI**
[NP\\_659458](#)
**Dilution Range**

MARCH8 antibody can be used for detection of MARCH8 by Western blot at 0.5 - 1 µg/mL. Antibody can also be used for immunocytochemistry starting at 2.5 µg/mL. Antibody validated: Western Blot in human samples and Immunocytochemistry in human samples. All other applications and species not yet tested.



Western blot analysis of MARCH8 in HeLa ...



Immunocytochemistry of MARCH8 in HeLa ce...