

---

## Product Datasheet

### MATN4 Antibody (orb1239466)

**Description**

MATN4 Antibody

**Species/Host**

Rabbit

**Reactivity**

Human, Mouse, Rat

**Conjugation**

Unconjugated

**Tested**

ELISA, IF, IHC-P, WB

**Applications**
**Immunogen**

MATN4 antibody was raised against a 13 amino acid synthetic peptide near the amino terminus of human MATN4. The immunogen is located within amino acids 110 - 160 of MATN4.

**Target**

MATN4

**Preservatives**

MATN4 Antibody is supplied in PBS containing 0.02% sodium azide.

**Form/Appearance**

Liquid

**Concentration**

1 mg/mL

**Storage**

MATN4 antibody can be stored at 4°C for three months and -20°C, stable for up to one year. As with all antibodies care should be taken to avoid repeated freeze thaw cycles. Antibodies should not be exposed to prolonged high temperatures.

**Note**

For research use only

**Application notes**

MATN4 antibody can be used for detection of MATN4 by Western blot at 1 µg/mL. Antibody can also be used for immunohistochemistry starting at 2.5 µg/mL. For immunofluorescence start at 20 µg/mL. Antibody validated: Western Blot in rat samples; Immunohistochemistry in mouse samples and Immunofluorescence in mouse samples. All other applications and species not yet tested.

**Isotype**

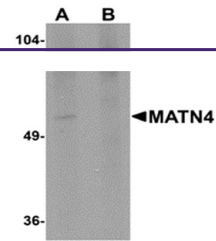
IgG

**Clonality**

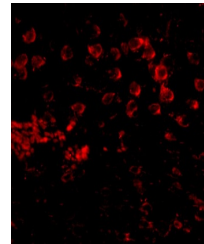
Polyclonal

**Uniprot ID**
[O95460](#)
**NCBI**
[NP\\_085080](#)
**Dilution Range**

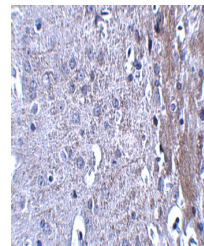
MATN4 antibody can be used for detection of MATN4 by Western blot at 1 µg/mL. Antibody can also be used for immunohistochemistry starting at 2.5 µg/mL. For immunofluorescence start at 20 µg/mL. Antibody validated: Western Blot in rat samples; Immunohistochemistry in mouse samples



Western blot analysis of MATN4 in rat br...



Immunofluorescence of MATN4 in mouse bra...



Immunohistochemistry of MATN4 in mouse b...