
Product Datasheet

MC4R Antibody (orb1239465)

Description

MC4R Antibody

Species/Host

Rabbit

Reactivity

Human, Mouse, Rat

Conjugation

Unconjugated

Tested Applications

ELISA, IF, IHC-P, WB

Immunogen

MC4R antibody was raised against a 19 amino acid synthetic peptide near the amino terminus of human MC4R. The immunogen is located within the first 50 amino acids of MC4R.

Target

MC4R

Preservatives

MC4R Antibody is supplied in PBS containing 0.02% sodium azide.

Form/Appearance

Liquid

Concentration

1 mg/mL

Storage

MC4R antibody can be stored at 4°C for three months and -20°C, stable for up to one year. As with all antibodies care should be taken to avoid repeated freeze thaw cycles. Antibodies should not be exposed to prolonged high temperatures.

Note

For research use only

Application notes

MC4R antibody can be used for detection of MC4R by Western blot at 1 µg/mL. Antibody can also be used for immunohistochemistry starting at 2.5 µg/mL. For immunofluorescence start at 20 µg/mL. Antibody validated: Western Blot in rat samples; Immunohistochemistry in human samples and Immunofluorescence in human samples. All other applications and species not yet tested.

Isotype

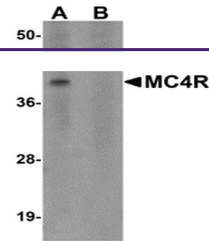
IgG

Clonality

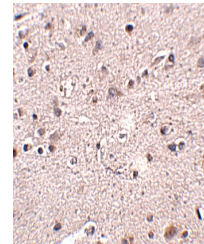
Polyclonal

Uniprot ID
[P32245](#)
NCBI
[NP_005903](#)
Dilution Range

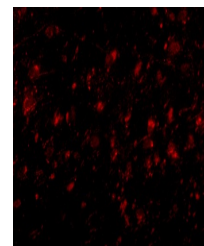
MC4R antibody can be used for detection of MC4R by Western blot at 1 µg/mL. Antibody can also be used for immunohistochemistry starting at 2.5 µg/mL. For immunofluorescence start at 20 µg/mL. Antibody validated: Western Blot in rat samples; Immunohistochemistry in human samples and



Western blot analysis of MC4R in rat bra...



Immunohistochemistry of MC4R in human br...



Immunofluorescence of MC4R in Human Brai...