
Product Datasheet

PCBP4 Antibody (orb1239464)

Description

PCBP4 Antibody

Species/Host

Rabbit

Reactivity

Human

Conjugation

Unconjugated

Tested Applications

ELISA, ICC, IF, WB

Immunogen

MCG10 antibody was raised against a 17 amino acid synthetic peptide from near the carboxy terminus of human MCG10. The immunogen is located within the last 50 amino acids of MCG10.

Target

PCBP4

Preservatives

MCG10 Antibody is supplied in PBS containing 0.02% sodium azide.

Form/Appearance

Liquid

Concentration

1 mg/ml

Storage

MCG10 antibody can be stored at 4°C for three months and -20°C, stable for up to one year. As with all antibodies care should be taken to avoid repeated freeze thaw cycles. Antibodies should not be exposed to prolonged high temperatures.

Note

For research use only

Application notes

MCG10 antibody can be used for detection of MCG10 by Western blot at 0.5 - 2 µg/mL. Antibody can also be used for immunocytochemistry starting at 1 µg/mL. For immunofluorescence start at 20 µg/mL. Antibody validated: Western Blot in human samples; Immunocytochemistry in human samples and Immunofluorescence in human samples. All other applications and species not yet tested.

Isotype

IgG

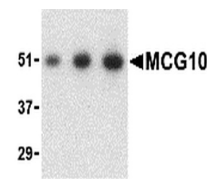
Clonality

Polyclonal

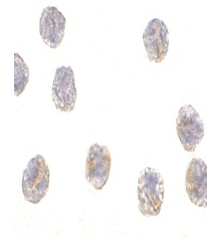
Uniprot ID
P57723
NCBI
EAW65166
Dilution Range

MCG10 antibody can be used for detection of MCG10 by Western blot at 0.5 - 2 µg/mL. Antibody can also be used for immunocytochemistry starting at 1 µg/mL. For immunofluorescence start at 20 µg/mL. Antibody validated: Western Blot in human samples; Immunocytochemistry in human samples

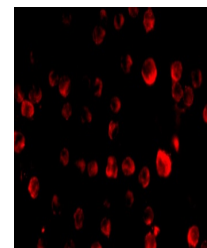
A B C



Western blot analysis of MCG10 in HeLa c...



Immunocytochemistry of MCG10 in HeLa cel...



Immunofluorescence of MCG10 in HeLa cell...