

## Product Datasheet

### LY86 Antibody (orb1239460)

## Description

LY86 Antibody

### Species/Host

Rabbit

### Reactivity

Human

### Conjugation

Unconjugated

### Tested

ELISA, IHC-P, WB

### Applications

### Immunogen

MD-1 antibody was raised against a 14 amino acid synthetic peptide from near the carboxy terminus of human MD-1. The immunogen is located within the last 50 amino acids of MD-1.

### Target

LY86

### Preservatives

MD-1 Antibody is supplied in PBS containing 0.02% sodium azide.

### Form/Appearance

Liquid

### Concentration

1 mg/mL

### Storage

MD-1 antibody can be stored at 4°C for three months and -20°C, stable for up to one year. As with all antibodies care should be taken to avoid repeated freeze thaw cycles. Antibodies should not be exposed to prolonged high temperatures.

### Note

For research use only

### Application notes

MD-1 antibody can be used for the detection of MD-1 by Western blot at 0.5 - 2 µg/mL. Antibody can also be used for immunohistochemistry starting at 2 µg/mL. Antibody validated: Western Blot in human samples and Immunohistochemistry in human samples. All other applications and species not yet tested.

### Isotype

IgG

### Clonality

Polyclonal

### Uniprot ID

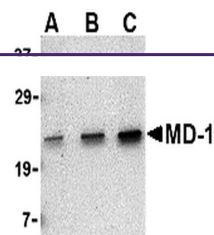
[O95711](#)

### NCBI

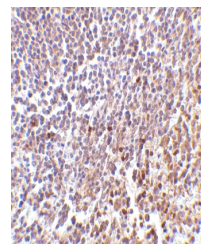
[NP\\_004262](#)

### Dilution Range

MD-1 antibody can be used for the detection of MD-1 by Western blot at 0.5 - 2 µg/mL. Antibody can also be used for immunohistochemistry starting at 2 µg/mL. Antibody validated: Western Blot in human samples and Immunohistochemistry in human samples. All other applications and species not yet tested.



Western blot analysis of MD-1 in Daudi c...



Immunohistochemistry of MD-1 in human sp...