

Product Datasheet

LY86 Antibody (orb1239459)

Description

LY86 Antibody

Species/Host

Rabbit

Reactivity

Human, Mouse, Rat

Conjugation

Unconjugated

Tested Applications

ELISA, IHC-P, WB

Immunogen

MD-1 antibody was raised against a 15 amino acid synthetic peptide from near the center of human MD-1. The immunogen is located within the last 50 amino acids of MD-1.

Target

LY86

Preservatives

MD-1 Antibody is supplied in PBS containing 0.02% sodium azide.

Form/Appearance

Liquid

Concentration

1 mg/mL

Storage

MD-1 antibody can be stored at 4°C for three months and -20°C, stable for up to one year. As with all antibodies care should be taken to avoid repeated freeze thaw cycles. Antibodies should not be exposed to prolonged high temperatures.

Note

For research use only

Application notes

MD-1 antibody can be used for the detection of MD-1 by Western blot at 1 - 2 µg/mL. Antibody can also be used for immunohistochemistry starting at 2.5 µg/mL. Antibody validated: Western Blot in human samples and Immunohistochemistry in human samples. All other applications and species not yet tested.

Isotype

IgG

Clonality

Polyclonal

Uniprot ID

[O95711](#)

NCBI

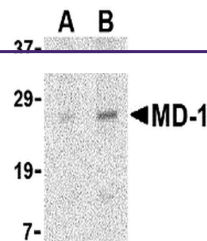
[NP_004262](#)

Dilution Range

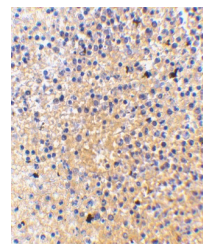
MD-1 antibody can be used for the detection of MD-1 by Western blot at 1 - 2 µg/mL. Antibody can also be used for immunohistochemistry starting at 2.5 µg/mL. Antibody validated: Western Blot in human samples and Immunohistochemistry in human samples. All other applications and species not yet tested.

Expiration Date

12 months from date of receipt.



Western blot analysis of MD-1 in Daudi c...



Immunohistochemistry of MD-1 in human sp...