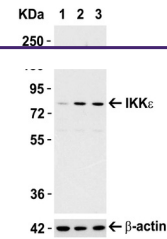
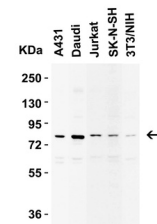

Product Datasheet

IKBKE Antibody (orb1239458)

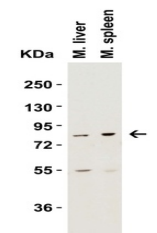
Description	IKBKE Antibody
Species/Host	Rabbit
Reactivity	Human, Mouse
Conjugation	Unconjugated
Tested Applications	ELISA, IF, IHC-P, WB
Immunogen	Anti-IKK epsilon antibody (orb1239458) was raised against a peptide corresponding to 16 amino acids near the carboxy terminus of human IKK epsilon. The immunogen is located within the last 50 amino acids of IKK epsilon.
Target	IKBKE
Preservatives	IKK epsilon Antibody is supplied in PBS containing 0.02% sodium azide.
Form/Appearance	Liquid
Concentration	1 mg/ml
Storage	IKK epsilon antibody can be stored at 4°C for three months and -20°C, stable for up to one year. As with all antibodies care should be taken to avoid repeated freeze thaw cycles. Antibodies should not be exposed to prolonged high temperatures.
Note	For research use only
Isotype	IgG
Clonality	Polyclonal
MW	Predicted: 80kD Observed: 80 kD
Uniprot ID	Q14164
NCBI	AF241789
Dilution Range	WB: 1-2 µg/mL; IHC: 10 µg/mL; IF: 20 µg/mL. Antibody validated: Western Blot in human and mouse samples; Immunohistochemistry in human samples; Immunofluorescence in human samples. All other applications and species not yet tested.
Expiration Date	12 months from date of receipt.



Induction Validation in Mouse Cell Line....



Western Blot Validation in Human and Mou...



Western Blot Validation in Mouse Tissue

...