
Product Datasheet

CHUK Antibody (orb1239457)

Description

CHUK Antibody

Species/Host

Rabbit

Reactivity

Human

Conjugation

Unconjugated

Tested

ELISA, ICC, IF, WB

Applications
Immunogen

IKK alpha antibody was raised against a 19 amino acid peptide near the carboxy terminus of human IKK alpha. The immunogen is located within the last 50 amino acids of IKK alpha.

Target

CHUK

Preservatives

IKK alpha Antibody is supplied in PBS containing 0.02% sodium azide.

Form/Appearance

Liquid

Concentration

1 mg/ml

Storage

IKK alpha antibody can be stored at 4°C for three months and -20°C, stable for up to one year. As with all antibodies care should be taken to avoid repeated freeze thaw cycles. Antibodies should not be exposed to prolonged high temperatures.

Note

For research use only

Application notes

IKK alpha can be used for detection of IKK alpha by Western blot at 1 µg/mL. An 85 kDa band should be detected. Antibody can also be used for immunocytochemistry starting at 1 µg/mL. For immunofluorescence start at 20 µg/mL. Antibody validated: Western Blot in human samples; Immunocytochemistry in human samples and Immunofluorescence in human samples. All other applications and species not yet tested.

Isotype

IgG

Clonality

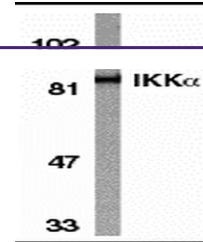
Polyclonal

MW

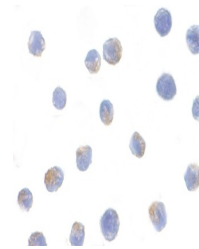
85 kDa

Uniprot ID
[O15111](#)
NCBI
[AF009225](#)
Dilution Range

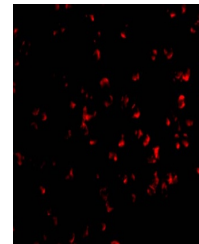
IKK alpha can be used for detection of IKK alpha by Western blot at 1 µg/mL. An 85 kDa band should be detected. Antibody can also be used for immunocytochemistry starting at 1 µg/mL. For



Western blot analysis of IKK alpha in He...



Immunocytochemistry of IKK alpha in Jurka...



Immunofluorescence of IKK alpha in Jurka...