
Product Datasheet

IFIH1 Antibody (orb1239455)

Description

IFIH1 Antibody

Species/Host

Rabbit

Reactivity

Human, Mouse

Conjugation

Unconjugated

Tested

ELISA, IF, IHC-P, WB

Applications
Immunogen

MDA5 antibody was raised against a 16 amino acid synthetic peptide from near the center of human MDA5. The immunogen is located within amino acids 330 - 380 of MDA5.

Target

IFIH1

Preservatives

MDA5 Antibody is supplied in PBS containing 0.02% sodium azide.

Form/Appearance

Liquid

Concentration

1 mg/mL

Storage

MDA5 antibody can be stored at 4°C for three months and -20°C, stable for up to one year. As with all antibodies care should be taken to avoid repeated freeze thaw cycles. Antibodies should not be exposed to prolonged high temperatures.

Note

For research use only

Application notes

MDA5 antibody can be used for detection of MDA5 by Western blot at 1 - 4 µg/mL. Antibody can also be used for immunohistochemistry starting at 5 µg/mL. For immunofluorescence start at 20 µg/mL. Antibody validated: Western Blot in human samples; Immunohistochemistry in human samples and Immunofluorescence in human samples. All other applications and species not yet tested.

Isotype

IgG

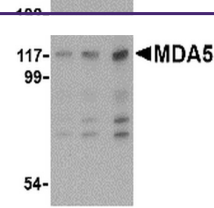
Clonality

Polyclonal

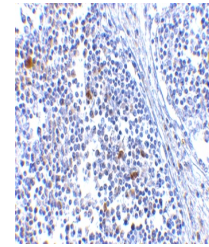
Uniprot ID
[Q9BYX4](#)
NCBI
[NP_071451](#)
Dilution Range

MDA5 antibody can be used for detection of MDA5 by Western blot at 1 - 4 µg/mL. Antibody can also be used for immunohistochemistry starting at 5 µg/mL. For immunofluorescence start at 20 µg/mL. Antibody validated: Western Blot in human samples; Immunohistochemistry in human samples and

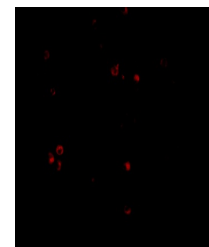
A B C



Western blot analysis of MDA5 in Daudi c...



Immunohistochemistry of MDA5 in human ly...



Immunofluorescence of MDA5 in Human Lymph...