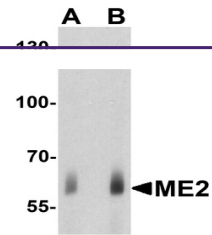
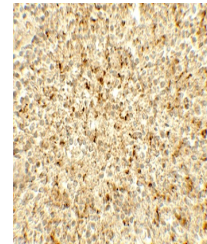

Product Datasheet

ME2 Antibody (orb1239452)

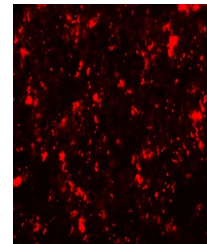
Description	ME2 Antibody
Species/Host	Rabbit
Reactivity	Human
Conjugation	Unconjugated
Tested Applications	ELISA, IF, IHC-P, WB
Immunogen	ME2 antibody was raised against a 17 amino acid peptide near the center of human ME2. The immunogen is located within amino acids 340 - 390 of ME2.
Target	ME2
Preservatives	ME2 Antibody is supplied in PBS containing 0.02% sodium azide.
Form/Appearance	Liquid
Concentration	1 mg/mL
Storage	ME2 antibody can be stored at 4°C for three months and -20°C, stable for up to one year.
Note	For research use only
Application notes	ME2 antibody can be used for detection of ME2 by Western blot at 1 - 2 µg/ml. Antibody can also be used for Immunohistochemistry at 5 µg/mL. For Immunofluorescence start at 20 µg/mL. Antibody validated: Western Blot in human samples; Immunohistochemistry in human samples and Immunofluorescence in human samples. All other applications and species not yet tested.
Isotype	IgG
Clonality	Polyclonal
MW	Predicted: 64 kDa Observed: 60 kDa
Uniprot ID	P23368
NCBI	NP_002387
Dilution Range	ME2 antibody can be used for detection of ME2 by Western blot at 1 - 2 µg/ml. Antibody can also be used for Immunohistochemistry at 5 µg/mL. For Immunofluorescence start at 20 µg/mL. Antibody validated: Western Blot in human samples; Immunohistochemistry in human samples and Immunofluorescence in human samples. All other applications and species not yet tested.



Western blot analysis of ME2 in human spleen.



Immunohistochemistry of ME2 in human spleen.



Immunofluorescence of ME2 in human spleen.