
Product Datasheet

MED4 Antibody (orb1239449)

Description

MED4 Antibody

Species/Host

Rabbit

Reactivity

Human, Mouse, Rat

Conjugation

Unconjugated

Tested Applications

ELISA, IHC-P, WB

Immunogen

MED4 antibody was raised against a 17 amino acid synthetic peptide from near the carboxy terminus of human MED4. The immunogen is located within the last 50 amino acids of MED4.

Target

MED4

Preservatives

MED4 Antibody is supplied in PBS containing 0.02% sodium azide.

Form/Appearance

Liquid

Concentration

1 mg/mL

Storage

MED4 antibody can be stored at 4°C for three months and -20°C, stable for up to one year. As with all antibodies care should be taken to avoid repeated freeze thaw cycles. Antibodies should not be exposed to prolonged high temperatures.

Note

For research use only

Application notes

MED4 antibody can be used for detection of MED4 by Western blot at 0.5 µg/mL. Antibody can also be used for immunohistochemistry starting at 10 µg/mL. Antibody validated: Western Blot in human samples and Immunohistochemistry in human samples. All other applications and species not yet tested.

Isotype

IgG

Clonality

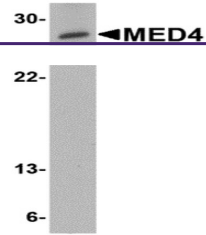
Polyclonal

Uniprot ID
[Q9NPJ6](#)
NCBI
[NP_054885](#)
Dilution Range

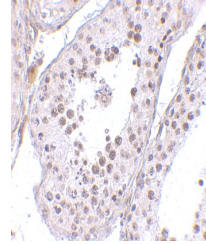
MED4 antibody can be used for detection of MED4 by Western blot at 0.5 µg/mL. Antibody can also be used for immunohistochemistry starting at 10 µg/mL. Antibody validated: Western Blot in human samples and Immunohistochemistry in human samples. All other applications and species not yet tested.

Expiration Date

12 months from date of receipt.



Western blot analysis of MED4 in human t...



Immunohistochemistry of MED4 in human te...