
Product Datasheet

METTL7A Antibody (orb1239446)

Description

METTL7A Antibody

Species/Host

Rabbit

Reactivity

Human, Mouse

Conjugation

Unconjugated

Tested Applications

ELISA, ICC, IF, WB

Immunogen

MettL7A antibody was raised against a 13 amino acid synthetic peptide near the center of human MettL7A. The immunogen is located within amino acids 130 - 180 of MettL7A.

Target

METTL7A

Preservatives

MettL7A Antibody is supplied in PBS containing 0.02% sodium azide.

Form/Appearance

Liquid

Concentration

1 mg/mL

Storage

MettL7A antibody can be stored at 4°C for three months and -20°C, stable for up to one year. As with all antibodies care should be taken to avoid repeated freeze thaw cycles. Antibodies should not be exposed to prolonged high temperatures.

Note

For research use only

Application notes

MettL7A antibody can be used for detection of MettL7A by Western blot at 2 µg/mL. Antibody can also be used for immunocytochemistry starting at 2 µg/mL. For immunofluorescence start at 2 µg/mL. Antibody validated: Western Blot in human samples and Immunocytochemistry in human samples. All other applications and species not yet tested.

Isotype

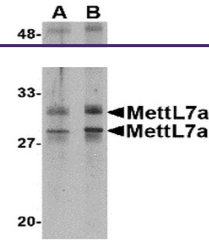
IgG

Clonality

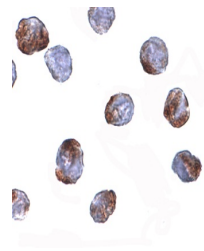
Polyclonal

Uniprot ID
[Q9H8H3](#)
NCBI
[NP_054752](#)
Dilution Range

MettL7A antibody can be used for detection of MettL7A by Western blot at 2 µg/mL. Antibody can also be used for immunocytochemistry starting at 2 µg/mL. For immunofluorescence start at 2 µg/mL. Antibody validated: Western Blot in human samples and Immunocytochemistry in human



Western blot analysis of MettL7A in MCF7 ...



Immunocytochemistry of MettL7a in MCF7

C...