
Product Datasheet

METTL7B Antibody (orb1239444)

Description

METTL7B Antibody

Species/Host

Rabbit

Reactivity

Human, Mouse

Conjugation

Unconjugated

Tested Applications

ELISA, IHC-P, WB

Immunogen

MettL7B antibody was raised against a 13 amino acid synthetic peptide near the amino terminus of human MettL7B. The immunogen is located within amino acids 20 - 70 of MettL7B.

Target

METTL7B

Preservatives

MettL7B Antibody is supplied in PBS containing 0.02% sodium azide.

Form/Appearance

Liquid

Concentration

1 mg/mL

Storage

MettL7B antibody can be stored at 4°C for three months and -20°C, stable for up to one year. As with all antibodies care should be taken to avoid repeated freeze thaw cycles. Antibodies should not be exposed to prolonged high temperatures.

Note

For research use only

Application notes

MettL7b antibody can be used for detection of mettl7b by Western blot at 1 - 2 µg/mL. Antibody can also be used for immunohistochemistry starting at 2.5 µg/mL. Antibody validated: Western Blot in human samples and Immunohistochemistry in human samples. All other applications and species not yet tested.

Isotype

IgG

Clonality

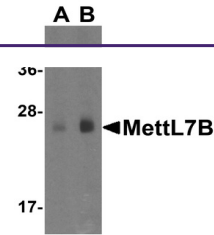
Polyclonal

MW

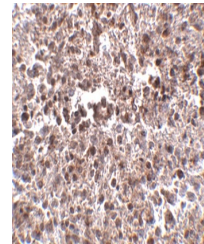
Predicted: 27 kDa Observed: 27 kDa

Uniprot ID
[Q6UX53](#)
NCBI
[NP_689850](#)
Dilution Range

MettL7b antibody can be used for detection of mettl7b by Western blot at 1 - 2 µg/mL. Antibody can also be used for immunohistochemistry starting at 2.5 µg/mL. Antibody validated: Western Blot in human samples and Immunohistochemistry in human samples. All other applications and species not yet tested.



Western blot analysis of MettL7B in huma...



Immunohistochemistry of MettL7B in human...