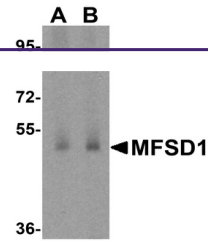
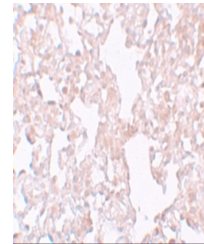

Product Datasheet

MFSD1 Antibody (orb1239441)

Description	MFSD1 Antibody
Species/Host	Rabbit
Reactivity	Human, Mouse, Rat
Conjugation	Unconjugated
Tested Applications	ELISA, IHC-P, WB
Immunogen	MFSD1 antibody was raised against an 18 amino acid synthetic peptide near the center of human MFSD1. The immunogen is located within amino acids 220 - 270 of MFSD1.
Target	MFSD1
Preservatives	MFSD1 Antibody is supplied in PBS containing 0.02% sodium azide.
Form/Appearance	Liquid
Concentration	1 mg/mL
Storage	MFSD1 antibody can be stored at 4°C for three months and -20°C, stable for up to one year. As with all antibodies care should be taken to avoid repeated freeze thaw cycles. Antibodies should not be exposed to prolonged high temperatures.
Note	For research use only
Application notes	MFSD1 antibody can be used for detection of MFSD1 by Western blot at 1 - 2 µg/mL. Antibody can also be used for immunohistochemistry starting at 10 µg/mL. Antibody validated: Western Blot in human samples and Immunohistochemistry in rat samples. All other applications and species not yet tested.
Isotype	IgG
Clonality	Polyclonal
Uniprot ID	Q9H3U5
NCBI	NP_073573
Dilution Range	MFSD1 antibody can be used for detection of MFSD1 by Western blot at 1 - 2 µg/mL. Antibody can also be used for immunohistochemistry starting at 10 µg/mL. Antibody validated: Western Blot in human samples and Immunohistochemistry in rat samples. All other applications and species not yet tested.
Expiration Date	12 months from date of receipt.



Western blot analysis of MFSD1 in human ...



Immunohistochemistry of MFSD1 in rat lun...