
Product Datasheet

MICA Antibody (orb1239438)

Description

MICA Antibody

Species/Host

Rabbit

Reactivity

Human, Mouse

Conjugation

Unconjugated

Tested Applications

ELISA, IF, IHC-P, WB

Immunogen

MICA antibody was raised against a 16 amino acid synthetic peptide from near the carboxy terminus of human MICA. The immunogen is located within the last 50 amino acids of MICA.

Target

MICA

Preservatives

MICA Antibody is supplied in PBS containing 0.02% sodium azide.

Form/Appearance

Liquid

Concentration

1 mg/mL

Storage

MICA antibody can be stored at 4°C up to one year. Antibodies should not be exposed to prolonged high temperatures.

Note

For research use only

Application notes

MICA antibody can be used for detection of MICA by Western blot at 0.5 - 2 µg/mL. Antibody can also be used for immunohistochemistry starting at 10 µg/mL. For immunofluorescence start at 20 µg/mL. Antibody validated: Western Blot in mouse samples; Immunohistochemistry in human samples and Immunofluorescence in human samples. All other applications and species not yet tested.

Isotype

IgG

Clonality

Polyclonal

MW

Predicted: 42 kDa Observed: 46 kDa

Uniprot ID

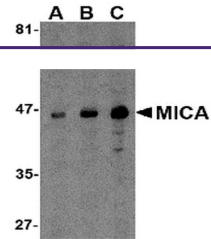
[Q29983](#)

NCBI

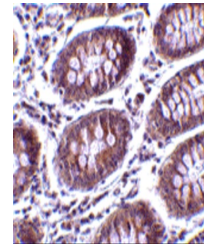
[NP_000238](#)

Dilution Range

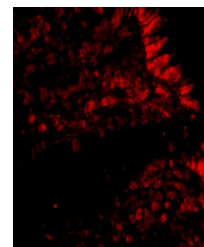
MICA antibody can be used for detection of MICA by Western blot at 0.5 - 2 µg/mL. Antibody can also be used for immunohistochemistry starting at 10 µg/mL. For immunofluorescence start at 20 µg/mL. Antibody validated: Western Blot in mouse samples; Immunohistochemistry in human samples and Immunofluorescence in human samples. All other



Western blot analysis of MICA in A-20 ce...



Immunohistochemistry of MICA in human co...



Immunofluorescence of MICA in Human Colo...