
Product Datasheet

ZNF667 Antibody (orb1239435)

Description

ZNF667 Antibody

Species/Host

Rabbit

Reactivity

Human, Mouse, Rat

Conjugation

Unconjugated

Tested

ELISA, IF, IHC-P, WB

Applications
Immunogen

MIPU1 antibody was raised against a 17 amino acid synthetic peptide near the amino terminus of human MIPU1. The immunogen is located within the first 50 amino acids of MIPU1.

Target

ZNF667

Preservatives

MIPU1 Antibody is supplied in PBS containing 0.02% sodium azide.

Form/Appearance

Liquid

Concentration

1 mg/mL

Storage

MIPU1 antibody can be stored at 4°C for three months and -20°C, stable for up to one year. As with all antibodies care should be taken to avoid repeated freeze thaw cycles. Antibodies should not be exposed to prolonged high temperatures.

Note

For research use only

Application notes

MIPU1 antibody can be used for detection of MIPU1 by Western blot at 1 µg/mL. Antibody can also be used for immunohistochemistry starting at 2.5 µg/mL. For immunofluorescence start at 20 µg/mL. Antibody validated: Western Blot in human samples; Immunohistochemistry in human samples and Immunofluorescence in human samples. All other applications and species not yet tested.

Isotype

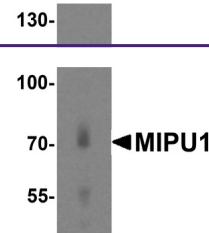
IgG

Clonality

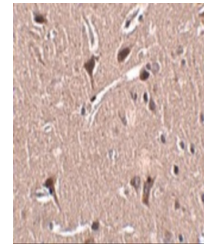
Polyclonal

Uniprot ID
[Q5HYK9](#)
NCBI
[NP_071386](#)
Dilution Range

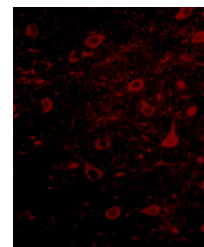
MIPU1 antibody can be used for detection of MIPU1 by Western blot at 1 µg/mL. Antibody can also be used for immunohistochemistry starting at 2.5 µg/mL. For immunofluorescence start at 20 µg/mL. Antibody validated: Western Blot in human samples; Immunohistochemistry in human samples



Western blot analysis of MIPU1 in human ...



Immunohistochemistry of MIPU1 in human b...



Immunofluorescence of MIPU1 in human brai...