
Product Datasheet

MORF4 Antibody (orb1239431)

Description

MORF4 Antibody

Species/Host

Rabbit

Reactivity

Human, Mouse, Rat

Conjugation

Unconjugated

Tested Applications

ELISA, IF, IHC-P, WB

Immunogen

MORF4 antibody was raised against a 18 amino acid synthetic peptide from near the amino terminus of human MORF4. The immunogen is located within amino acids 20 - 70 of MORF4.

Target

MORF4

Preservatives

MORF4 Antibody is supplied in PBS containing 0.02% sodium azide.

Form/Appearance

Liquid

Concentration

1 mg/mL

Storage

MORF4 antibody can be stored at 4°C for three months and -20°C, stable for up to one year. As with all antibodies care should be taken to avoid repeated freeze thaw cycles. Antibodies should not be exposed to prolonged high temperatures.

Note

For research use only

Application notes

MORF4 antibody can be used for the detection of MORF4 by Western blot at 1 and 2 µg/mL. Antibody can also be used for immunohistochemistry starting at 5 µg/mL. For immunofluorescence start at 20 µg/mL. Antibody validated: Western Blot in human samples; Immunohistochemistry in human samples and Immunofluorescence in human samples. All other applications and species not yet tested.

Isotype

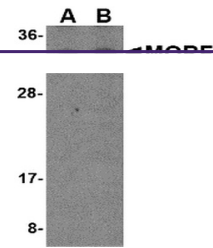
IgG

Clonality

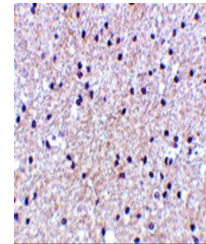
Polyclonal

Uniprot ID
[Q9Y690](#)
NCBI
[AAD29871](#)
Dilution Range

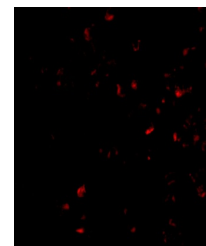
MORF4 antibody can be used for the detection of MORF4 by Western blot at 1 and 2 µg/mL. Antibody can also be used for immunohistochemistry starting at 5 µg/mL. For immunofluorescence start at 20 µg/mL. Antibody validated: Western Blot in human samples; Immunohistochemistry in human samples



Western blot analysis of MORF4 in K562 c...



Immunohistochemistry of MORF4 in human b...



Immunofluorescence of MORF4 in HepG2 cel...