
Product Datasheet

MEOX1 Antibody (orb1239429)

Description

MEOX1 Antibody

Species/Host

Rabbit

Reactivity

Human, Mouse, Rat

Conjugation

Unconjugated

Tested Applications

ELISA, ICC, IF, WB

Immunogen

MOX1 antibody was raised against a 19 amino acid synthetic peptide near the center of human MOX1. The immunogen is located within amino acids 140 - 190 of MOX1.

Target

MEOX1

Preservatives

MOX1 Antibody is supplied in PBS containing 0.02% sodium azide.

Form/Appearance

Liquid

Concentration

1 mg/mL

Storage

MOX1 antibody can be stored at 4°C for three months and -20°C, stable for up to one year. As with all antibodies care should be taken to avoid repeated freeze thaw cycles. Antibodies should not be exposed to prolonged high temperatures.

Note

For research use only

Application notes

MOX1 antibody can be used for detection of MOX1 by Western blot at 1 - 2 µg/mL. Antibody can also be used for immunocytochemistry starting at 10 µg/mL. For immunofluorescence start at 20 µg/mL. Antibody validated: Western Blot in human samples; Immunohistochemistry in rat samples and Immunofluorescence in rat samples. All other applications and species not yet tested.

Isotype

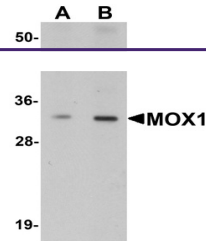
IgG

Clonality

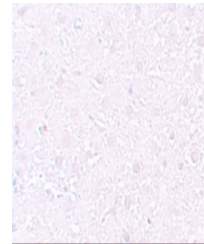
Polyclonal

Uniprot ID
P50221
NCBI
NP_004518
Dilution Range

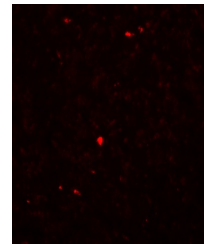
MOX1 antibody can be used for detection of MOX1 by Western blot at 1 - 2 µg/mL. Antibody can also be used for immunocytochemistry starting at 10 µg/mL. For immunofluorescence start at 20 µg/mL. Antibody validated: Western Blot in human samples; Immunohistochemistry in rat samples and



Western blot analysis of MOX1 in human l...



Immunohistochemistry of MOX1 in rat live...



Immunofluorescence of MOX1 in rat liver ...