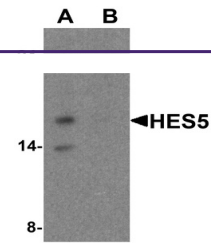


---

## Product Datasheet

### HES5 Antibody (orb1239428)

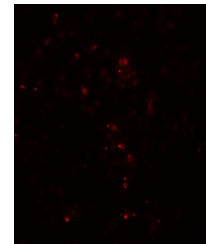
<b>Description</b>	HES5 Antibody
<b>Species/Host</b>	Rabbit
<b>Reactivity</b>	Human, Mouse, Rat
<b>Conjugation</b>	Unconjugated
<b>Tested Applications</b>	ELISA, IF, IHC-P, WB
<b>Immunogen</b>	HES5 antibody was raised against a 19 amino acid peptide near the amino terminus of human HES5. The immunogen is located within the first 50 amino acids of HES5.
<b>Target</b>	HES5
<b>Preservatives</b>	HES5 antibody is supplied in PBS containing 0.02% sodium azide.
<b>Form/Appearance</b>	Liquid
<b>Concentration</b>	1 mg/mL
<b>Storage</b>	HES5 antibody can be stored at 4°C for three months and -20°C, stable for up to one year.
<b>Note</b>	For research use only
<b>Application notes</b>	HES5 antibody can be used for detection of HES5 by Western blot at 1 - 2 µg/ml. Antibody can also be used for immunohistochemistry starting at 5 µg/mL. For immunofluorescence start at 20 µg/mL. Antibody validated: Western Blot in human samples; Immunohistochemistry in human and mouse samples and Immunofluorescence in human and mouse samples. All other applications and species not yet tested.
<b>Isotype</b>	IgG
<b>Clonality</b>	Polyclonal
<b>MW</b>	Predicted: 18 kDa Observed: 17 kDa
<b>Uniprot ID</b>	<a href="#">Q5TA89</a>
<b>NCBI</b>	<a href="#">NP_001010926</a>
<b>Dilution Range</b>	HES5 antibody can be used for detection of HES5 by Western blot at 1 - 2 µg/ml. Antibody can also be used for immunohistochemistry starting at 5 µg/mL. For immunofluorescence start at 20 µg/mL. Antibody validated: Western Blot in human samples; Immunohistochemistry in human and mouse samples and Immunofluorescence in human and mouse samples.



Western blot analysis of HES5 in Raji ce...



Immunohistochemistry of HES5 in human sp...



Immunofluorescence of HES5 in human sple...