
Product Datasheet

GRIK1 Antibody (orb1239425)

Description

GRIK1 Antibody

Species/Host

Rabbit

Reactivity

Human, Mouse

Conjugation

Unconjugated

Tested Applications

ELISA, IF, IHC-P, WB

Immunogen

Grik1 antibody was raised against a 15 amino acid synthetic peptide near the carboxy terminus of the human Grik1. The immunogen is located within the last 50 amino acids of Grik1.

Target

GRIK1

Preservatives

Grik1 Antibody is supplied in PBS containing 0.02% sodium azide.

Form/Appearance

Liquid

Concentration

1 mg/mL

Storage

Grik1 antibody can be stored at 4°C for three months and -20°C, stable for up to one year. As with all antibodies care should be taken to avoid repeated freeze thaw cycles. Antibodies should not be exposed to prolonged high temperatures.

Note

For research use only

Application notes

Grik1 antibody can be used for detection of Grik1 by Western blot at 0.5 - 2 µg/mL. Antibody can also be used for immunohistochemistry starting at 2.5 µg/mL. For immunofluorescence start at 20 µg/mL. Antibody validated: Western Blot in mouse samples; Immunohistochemistry in human and mouse samples and Immunofluorescence in human and mouse samples. All other applications and species not yet tested.

Isotype

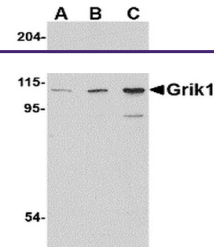
IgG

Clonality

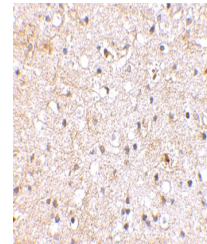
Polyclonal

Uniprot ID
[P39086](#)
NCBI
[P39086](#)
Dilution Range

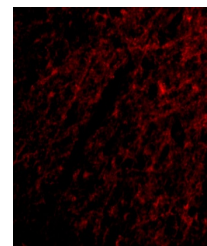
Grik1 antibody can be used for detection of Grik1 by Western blot at 0.5 - 2 µg/mL. Antibody can also be used for immunohistochemistry starting at 2.5 µg/mL. For immunofluorescence start at 20 µg/mL. Antibody validated: Western Blot in mouse samples;



Western blot analysis of Grik1 in P815 c...



Immunohistochemical staining of human br...



Immunofluorescence of Grik1 in Human Bra...