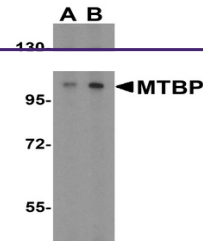

Product Datasheet

MTBP Antibody (orb1239424)

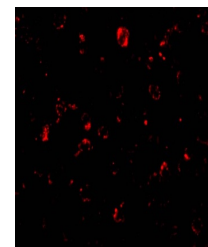
Description	MTBP Antibody
Species/Host	Rabbit
Reactivity	Human
Conjugation	Unconjugated
Tested Applications	ELISA, ICC, IF, WB
Immunogen	MTBP antibody was raised against a 18 amino acid peptide near the center of human MTBP. The immunogen is located within amino acids 110 - 160 of MTBP.
Target	MTBP
Preservatives	MTBP Antibody is supplied in PBS containing 0.02% sodium azide.
Form/Appearance	Liquid
Concentration	1 mg/ml
Storage	MTBP antibody can be stored at 4°C for three months and -20°C, stable for up to one year. As with all antibodies care should be taken to avoid repeated freeze thaw cycles. Antibodies should not be exposed to prolonged high temperatures.
Note	For research use only
Application notes	MTBP antibody can be used for detection of MTBP by Western blot at 1 to 2 µg/mL. A 104 kDa band can be detected. Antibody can also be used for immunocytochemistry starting at 5 µg/mL. For immunofluorescence start at 20 µg/mL. Antibody validated: Western Blot in human samples; Immunocytochemistry in human samples and Immunofluorescence in human samples. All other applications and species not yet tested.
Isotype	IgG
Clonality	Polyclonal
MW	Predicted: 104 kDa Observed: 104 kDa
Uniprot ID	Q96DY7
NCBI	NP_071328
Dilution Range	MTBP antibody can be used for detection of MTBP by Western blot at 1 to 2 µg/mL. A 104 kDa band can be detected. Antibody can also be used for immunocytochemistry starting at 5 µg/mL. For



Western blot analysis of MTBP expression...



Immunocytochemistry of MTBP in K562 cell...



Immunofluorescence of MTBP in K562 cells...