
Product Datasheet

Mtch2 Antibody (orb1239423)

Description

Mtch2 Antibody

Species/Host

Rabbit

Reactivity

Human, Mouse

Conjugation

Unconjugated

Tested Applications

ELISA, IF, IHC-P, WB

Immunogen

MTCH2 antibody was raised against a 15 amino acid synthetic peptide near the amino terminus of human MTCH2. The immunogen is located within amino acids 80 - 130 of MTCH2.

Target

Mtch2

Preservatives

MTCH2 Antibody is supplied in PBS containing 0.02% sodium azide.

Form/Appearance

Liquid

Concentration

1 mg/mL

Storage

MTCH2 antibody can be stored at 4°C for three months and -20°C, stable for up to one year. As with all antibodies care should be taken to avoid repeated freeze thaw cycles. Antibodies should not be exposed to prolonged high temperatures.

Note

For research use only

Application notes

MTCH2 antibody can be used for detection of MTCH2 by Western blot at 1 µg/mL. Antibody can also be used for immunohistochemistry starting at 5 µg/mL. For immunofluorescence start at 20 µg/mL. Antibody validated: Western Blot in human samples; Immunohistochemistry in mouse samples and Immunofluorescence in mouse samples. All other applications and species not yet tested.

Isotype

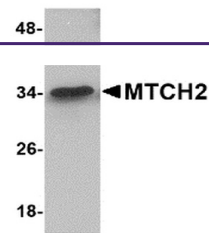
IgG

Clonality

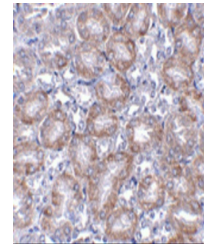
Polyclonal

Uniprot ID
[Q791V5](#)
NCBI
[NP_055157](#)
Dilution Range

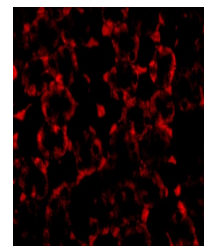
MTCH2 antibody can be used for detection of MTCH2 by Western blot at 1 µg/mL. Antibody can also be used for immunohistochemistry starting at 5 µg/mL. For immunofluorescence start at 20 µg/mL. Antibody validated: Western Blot in human samples; Immunohistochemistry in mouse samples and



Western blot analysis of MTCH2 in 293 ce...



Immunohistochemistry of MTCH2 in mouse k...



Immunofluorescence of MTCH2 in Mouse Kid...