
Product Datasheet

MTERFD2 Antibody (orb1239421)

Description

MTERFD2 Antibody

Species/Host

Rabbit

Reactivity

Human, Mouse, Rat

Conjugation

Unconjugated

Tested Applications

ELISA, IF, IHC-P, WB

Immunogen

MTERFD2 antibody was raised against a 17 amino acid peptide near the carboxy terminus of human MTERFD2 .The immunogen is located within amino acids 260 - 310 of MTERFD2.

Target

MTERFD2

Preservatives

MTERFD2 Antibody is supplied in PBS containing 0.02% sodium azide.

Form/Appearance

Liquid

Concentration

1 mg/mL

Storage

MTERFD2 antibody can be stored at 4°C for three months and -20°C, stable for up to one year.

Note

For research use only

Application notes

MTERFD2 Antibody can be used for detection of MTERFD2 by Western blot at 1 µg/mL.Antibody validated: Western Blot in human samples; Immunohistochemistry in human samples and Immunofluorescence in human samples. All other applications and species not yet tested.

Isotype

IgG

Clonality

Polyclonal

MW

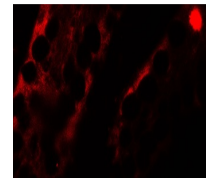
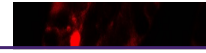
Predicted: 42 kDa Observed: 44 kDa

Uniprot ID
[Q7Z6M4](https://www.uniprot.org/uniprot/Q7Z6M4)
NCBI
[NP_872307](https://www.ncbi.nlm.nih.gov/nuccore/NP_872307)
Dilution Range

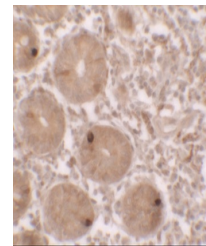
MTERFD2 Antibody can be used for detection of MTERFD2 by Western blot at 1 µg/mL.Antibody validated: Western Blot in human samples; Immunohistochemistry in human samples and Immunofluorescence in human samples. All other applications and species not yet tested.

Expiration Date

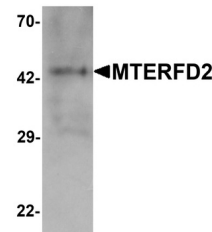
12 months from date of receipt.



Immunofluorescence of MTERFD2 in human S...



Immunohistochemistry of MTERFD2 in human...



Western blot analysis of MTERFD2 in huma...