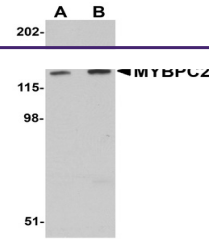
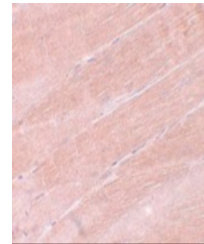

Product Datasheet

MYBPC2 Antibody (orb1239418)

Description	MYBPC2 Antibody
Species/Host	Rabbit
Reactivity	Human, Mouse
Conjugation	Unconjugated
Tested Applications	ELISA, IHC-P, WB
Immunogen	MYBPC2 antibody was raised against a 15 amino acid synthetic peptide near the carboxy terminus of human MYBPC2. The immunogen is located within amino acids 1070 - 1120 of MYBPC2.
Target	MYBPC2
Preservatives	MYBPC2 Antibody is supplied in PBS containing 0.02% sodium azide.
Form/Appearance	Liquid
Concentration	1 mg/mL
Storage	MYBPC2 antibody can be stored at 4°C for three months and -20°C, stable for up to one year. As with all antibodies care should be taken to avoid repeated freeze thaw cycles. Antibodies should not be exposed to prolonged high temperatures.
Note	For research use only
Application notes	MYBPC2 antibody can be used for detection of MYBPC2 by Western blot at 1 - 2 µg/mL. Antibody can also be used for immunohistochemistry starting at 5 µg/mL. Antibody validated: Western Blot in mouse samples and Immunohistochemistry in mouse samples. All other applications and species not yet tested.
Isotype	IgG
Clonality	Polyclonal
Uniprot ID	Q14324
NCBI	EAW71866
Dilution Range	MYBPC2 antibody can be used for detection of MYBPC2 by Western blot at 1 - 2 µg/mL. Antibody can also be used for immunohistochemistry starting at 5 µg/mL. Antibody validated: Western Blot in mouse samples and Immunohistochemistry in mouse samples. All other applications and species not yet tested.



Western blot analysis of MYBPC2 in mouse...



Immunohistochemistry of MYBPC2 in mouse

...