
Product Datasheet

GPAM Antibody (orb1239417)

Description

GPAM Antibody

Species/Host

Rabbit

Reactivity

Human, Mouse, Rat

Conjugation

Unconjugated

Tested Applications

ELISA, IF, IHC-P, WB

Immunogen

GPAT1 antibody was raised against a 15 amino acid synthetic peptide near the carboxy terminus of the human GPAT1. The immunogen is located within amino acids 730 - 780 of GPAT1.

Target

GPAM

Preservatives

GPAT1 Antibody is supplied in PBS containing 0.02% sodium azide.

Form/Appearance

Liquid

Concentration

1 mg/mL

Storage

GPAT1 antibody can be stored at 4°C for three months and -20°C, stable for up to one year. As with all antibodies care should be taken to avoid repeated freeze thaw cycles. Antibodies should not be exposed to prolonged high temperatures.

Note

For research use only

Application notes

GPAT1 antibody can be used for detection of GPAT1 by Western blot at 1 - 2 µg/mL. Antibody can also be used for immunohistochemistry starting at 2.5 µg/mL. For immunofluorescence start at 20 µg/mL. Antibody validated: Western Blot in rat samples; Immunohistochemistry in mouse and rat samples and Immunofluorescence in mouse and rat samples. All other applications and species not yet tested.

Isotype

IgG

Clonality

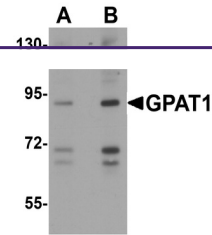
Polyclonal

MW

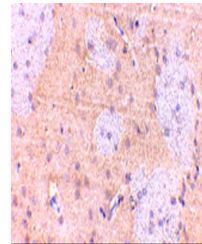
Predicted: 87, 91 kDa Observed: 92 kDa

Uniprot ID
[Q9HCL2](#)
NCBI
[NP_065969](#)
Dilution Range

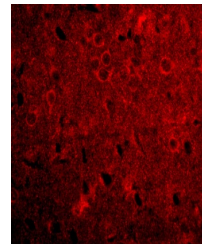
GPAT1 antibody can be used for detection of GPAT1 by Western blot at 1 - 2 µg/mL. Antibody can also be used for immunohistochemistry starting at 2.5 µg/mL. For immunofluorescence start at 20



Western blot analysis of GPAT1 in rat br...



Immunohistochemistry of GPAT1 in rat bra...



Immunofluorescence of GPAT1 in Rat Brain...