
Product Datasheet

GLS2 Antibody (orb1239416)

Description

GLS2 Antibody

Species/Host

Rabbit

Reactivity

Human, Mouse, Rat

Conjugation

Unconjugated

Tested Applications

ELISA, IF, IHC-P, WB

Immunogen

GLS2 antibody was raised against an 18 amino acid synthetic peptide near the center terminus of human GLS2. The immunogen is located within amino acids 300 - 350 of GLS2.

Target

GLS2

Preservatives

GLS2 Antibody is supplied in PBS containing 0.02% sodium azide.

Form/Appearance

Liquid

Concentration

1 mg/mL

Storage

GLS2 antibody can be stored at 4°C up to one year. Antibodies should not be exposed to prolonged high temperatures.

Note

For research use only

Application notes

GLS2 antibody can be used for detection of GLS2 by Western blot at 0.5 - 1 µg/mL. Antibody can also be used for immunohistochemistry starting at 5 µg/mL. For immunofluorescence start at 20 µg/mL. Antibody validated: Western Blot in rat samples; Immunohistochemistry in mouse and rat samples and Immunofluorescence in mouse and rat samples. All other applications and species not yet tested.

Isotype

IgG

Clonality

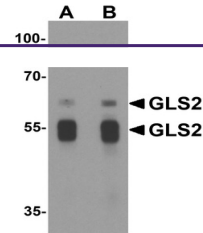
Polyclonal

MW

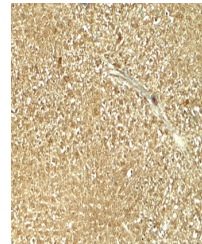
Predicted: 36, 55, 62, 66 kDa Observed: 55, 62 kDa

Uniprot ID
[Q9UI32](#)
NCBI
[NP_037399](#)
Dilution Range

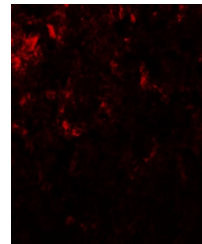
GLS2 antibody can be used for detection of GLS2 by Western blot at 0.5 - 1 µg/mL. Antibody can also be used for immunohistochemistry starting at 5 µg/mL. For immunofluorescence start at 20 µg/mL. Antibody validated: Western Blot in rat samples; Immunohistochemistry in mouse and rat samples and Immunofluorescence in mouse and rat samples.



Western blot analysis of GLS2 in rat liv...



Immunohistochemistry of GLS2 in rat live...



Immunofluorescence of GLS2 in rat liver ...