
Product Datasheet

NGFRAP1 Antibody (orb1239409)

Description

NGFRAP1 Antibody

Species/Host

Rabbit

Conjugation

Unconjugated

Tested Applications

ELISA, IHC-P, WB

Immunogen

NADE antibody was raised against a peptide corresponding to 14 amino acids near the middle of human NADE. The immunogen is located within the last 50 amino acids of NADE.

Target

NGFRAP1

Preservatives

NADE Antibody is supplied in PBS containing 0.02% sodium azide.

Form/Appearance

Liquid

Concentration

1 mg/mL

Storage

NADE antibody can be stored at 4°C for three months and -20°C, stable for up to one year. As with all antibodies care should be taken to avoid repeated freeze thaw cycles. Antibodies should not be exposed to prolonged high temperatures.

Note

For research use only

Application notes

NADE antibody can be used for detection of NADE by Western blot at 1 µg/mL. Despite its predicted molecular weight, NADE migrates at ~23 kDa in SDS-PAGE. Antibody can also be used for immunohistochemistry starting at 2 µg/mL. Antibody validated: Western Blot in human samples and Immunohistochemistry in human samples. All other applications and species not yet tested.

Isotype

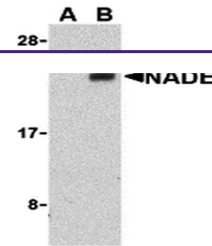
IgG

Clonality

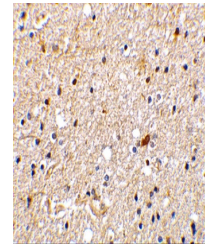
Polyclonal

Uniprot ID
[Q00994](#)
NCBI
[NP_996798](#)
Dilution Range

NADE antibody can be used for detection of NADE by Western blot at 1 µg/mL. Despite its predicted molecular weight, NADE migrates at ~23 kDa in SDS-PAGE. Antibody can also be used for immunohistochemistry starting at 2 µg/mL. Antibody validated: Western Blot in human samples and Immunohistochemistry in human samples. All other applications and species not yet tested.



Western blot analysis of NADE in Human b...



Immunohistochemistry of NADE in human br...