
Product Datasheet

NLRP11 Antibody (orb1239406)

Description

NLRP11 Antibody

Species/Host

Rabbit

Reactivity

Human

Conjugation

Unconjugated

Tested Applications

ELISA, ICC, IF, WB

Immunogen

NALP11 antibody was raised against a 15 amino acid synthetic peptide near the carboxy terminus of human NALP11. The immunogen is located within the last 50 amino acids of NALP11.

Target

NLRP11

Preservatives

NALP11 Antibody is supplied in PBS containing 0.02% sodium azide.

Form/Appearance

Liquid

Concentration

1 mg/mL

Storage

NALP11 antibody can be stored at 4°C for three months and -20°C, stable for up to one year. As with all antibodies care should be taken to avoid repeated freeze thaw cycles. Antibodies should not be exposed to prolonged high temperatures.

Note

For research use only

Application notes

NALP11 antibody can be used for detection of NALP11 by Western blot at 1 µg/mL. Antibody can also be used for immunocytochemistry starting at 2.5 µg/mL. For immunofluorescence start at 20 µg/mL. Antibody validated: Western Blot in human samples; Immunocytochemistry in human samples and Immunofluorescence in human samples. All other applications and species not yet tested.

Isotype

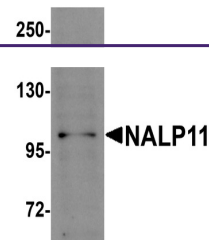
IgG

Clonality

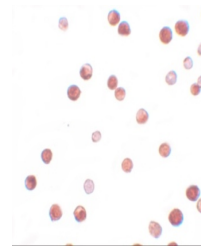
Polyclonal

Uniprot ID
P59045
NCBI
NP_659444
Dilution Range

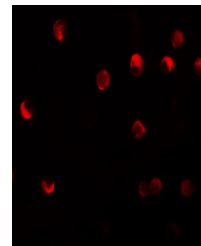
NALP11 antibody can be used for detection of NALP11 by Western blot at 1 µg/mL. Antibody can also be used for immunocytochemistry starting at 2.5 µg/mL. For immunofluorescence start at 20 µg/mL. Antibody validated: Western Blot in human samples; Immunocytochemistry in human samples



Western blot analysis of NALP11 in HeLa ...



Immunocytochemistry of NALP11 in HeLa ce...



Immunofluorescence of NALP11 in HeLa cel...