
Product Datasheet

NLRP13 Antibody (orb1239404)

Description

NLRP13 Antibody

Species/Host

Rabbit

Reactivity

Human

Conjugation

Unconjugated

Tested

ELISA, ICC, IF, WB

Applications
Immunogen

NALP13 antibody was raised against a 19 amino acid synthetic peptide near the amino terminus of human NALP13. The immunogen is located within amino acids 150 - 200 of NALP13.

Target

NLRP13

Preservatives

NALP13 Antibody is supplied in PBS containing 0.02% sodium azide.

Form/Appearance

Liquid

Concentration

1 mg/mL

Storage

NALP13 antibody can be stored at 4°C for three months and -20°C, stable for up to one year. As with all antibodies care should be taken to avoid repeated freeze thaw cycles. Antibodies should not be exposed to prolonged high temperatures.

Note

For research use only

Application notes

NALP13 antibody can be used for detection of NALP13 by Western blot at 1 µg/mL. Antibody can also be used for immunocytochemistry starting at 2.5 µg/mL. For immunofluorescence start at 20 µg/mL. Antibody validated: Western Blot in human samples; Immunocytochemistry in human samples and Immunofluorescence in human samples. All other applications and species not yet tested.

Isotype

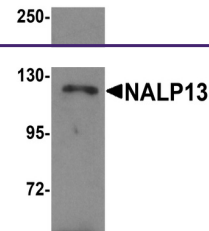
IgG

Clonality

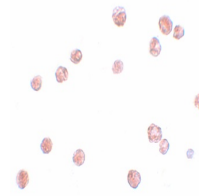
Polyclonal

Uniprot ID
[Q86W25](#)
NCBI
[EAW72420](#)
Dilution Range

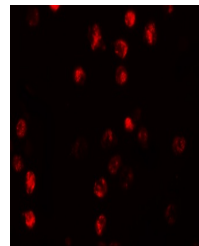
NALP13 antibody can be used for detection of NALP13 by Western blot at 1 µg/mL. Antibody can also be used for immunocytochemistry starting at 2.5 µg/mL. For immunofluorescence start at 20 µg/mL. Antibody validated: Western Blot in human samples; Immunocytochemistry in human samples



Western blot analysis of NALP13 in K562 ...



Immunocytochemistry of NALP13 in K562 ce...



Immunofluorescence of NALP13 in K562 cel...