

Product Datasheet

NLRP1 Antibody (orb1239403)

Description

NLRP1 Antibody

Species/Host

Rabbit

Reactivity

Human

Conjugation

Unconjugated

Tested

ELISA, ICC, IF, WB

Applications

Immunogen

NALP1 antibody was raised against a peptide corresponding to 13 amino acids near the carboxy terminus of human NALP1. The immunogen is located within the last 50 amino acids of NALP1.

Target

NLRP1

Preservatives

NALP1 Antibody is supplied in PBS containing 0.02% sodium azide.

Form/Appearance

Liquid

Concentration

1 mg/mL

Storage

NALP1 antibody can be stored at 4°C for three months and -20°C, stable for up to one year. As with all antibodies care should be taken to avoid repeated freeze thaw cycles. Antibodies should not be exposed to prolonged high temperatures.

Note

For research use only

Application notes

NALP1 antibody can be used for detection of NALP1 by Western blot at 1 to 4 µg/mL. Antibody can also be used for immunocytochemistry starting at 10 µg/mL. For immunofluorescence start at 20 µg/mL. Antibody validated: Western Blot in human samples; Immunocytochemistry in human samples and Immunofluorescence in human samples. All other applications and species not yet tested.

Isotype

IgG

Clonality

Polyclonal

Uniprot ID

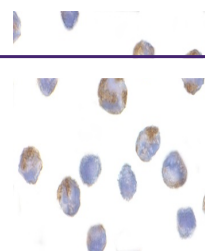
[Q9C000](#)

NCBI

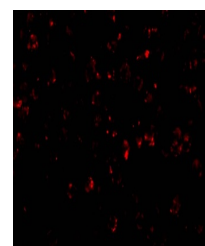
[AAG30288](#)

Dilution Range

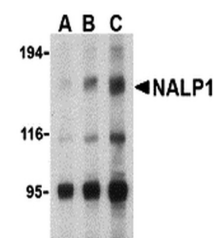
NALP1 antibody can be used for detection of NALP1 by Western blot at 1 to 4 µg/mL. Antibody can also be used for immunocytochemistry starting at 10 µg/mL. For immunofluorescence start at 20 µg/mL. Antibody validated: Western Blot in human samples; Immunocytochemistry in human samples



Immunocytochemistry of NALP1 in K562 cell...



Immunofluorescence of NALP1 in K562 cell...



Western blot analysis of NALP1 in U937 c...