

---

## Product Datasheet

### GATA3 Antibody (orb1239402)

**Description**

GATA3 Antibody

**Species/Host**

Rabbit

**Reactivity**

Human, Mouse, Rat

**Conjugation**

Unconjugated

**Tested Applications**

ELISA, IF, IHC-P, WB

**Immunogen**

GATA3 antibody was raised against a 17 amino acid synthetic peptide near the carboxy terminus of human GATA3. The immunogen is located within amino acids 340 - 390 of GATA3.

**Target**

GATA3

**Preservatives**

GATA3 Antibody is supplied in PBS containing 0.02% sodium azide.

**Form/Appearance**

Liquid

**Concentration**

1 mg/mL

**Storage**

GATA3 antibody can be stored at 4°C for three months and -20°C, stable for up to one year. As with all antibodies care should be taken to avoid repeated freeze thaw cycles. Antibodies should not be exposed to prolonged high temperatures.

**Note**

For research use only

**Application notes**

GATA3 antibody can be used for detection of GATA3 by Western blot at 1 - 2 µg/mL. Antibody can also be used for immunohistochemistry starting at 2.5 µg/mL. For immunofluorescence start at 20 µg/mL. Antibody validated: Western Blot in human samples; Immunohistochemistry in mouse and rat samples and Immunofluorescence in mouse and rat samples. All other applications and species not yet tested.

**Isotype**

IgG

**Clonality**

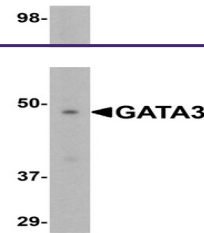
Polyclonal

**MW**

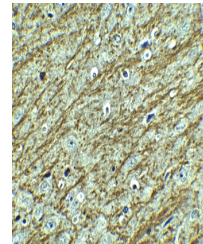
Predicted: 49 kDa Observed: 49 kDa

**Uniprot ID**
[P23771](#)
**NCBI**
[NP\\_001002295](#)
**Dilution Range**

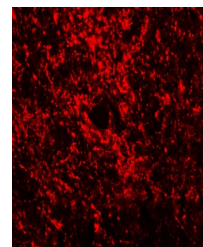
GATA3 antibody can be used for detection of GATA3 by Western blot at 1 - 2 µg/mL. Antibody can also be used for immunohistochemistry starting at 2.5 µg/mL. For immunofluorescence start at 20



Western blot analysis of GATA3 in K562 c...



Immunohistochemistry of GATA3 in rat bra...



Immunofluorescence of GATA3 in Rat Brain...