
Product Datasheet

NLRP5 Antibody (orb1239401)

Description

NLRP5 Antibody

Species/Host

Rabbit

Reactivity

Human, Mouse, Rat

Conjugation

Unconjugated

Tested Applications

ELISA, IF, IHC-P, WB

Immunogen

NALP5 antibody was raised against a 14 amino acid synthetic peptide near the carboxy terminus of human NALP5. The immunogen is located within the last 50 amino acids of NALP5.

Target

NLRP5

Preservatives

NALP5 Antibody is supplied in PBS containing 0.02% sodium azide.

Form/Appearance

Liquid

Concentration

1 mg/mL

Storage

NALP5 antibody can be stored at 4°C for three months and -20°C, stable for up to one year. As with all antibodies care should be taken to avoid repeated freeze thaw cycles. Antibodies should not be exposed to prolonged high temperatures.

Note

For research use only

Application notes

NALP5 antibody can be used for detection of NALP5 by Western blot at 1 µg/mL. Antibody can also be used for immunohistochemistry starting at 10 µg/mL. For immunofluorescence start at 20 µg/mL. Antibody validated: Western Blot in mouse samples; Immunohistochemistry in human samples and Immunofluorescence in human samples. All other applications and species not yet tested.

Isotype

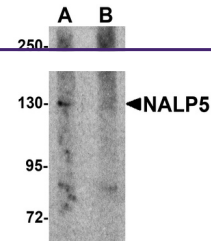
IgG

Clonality

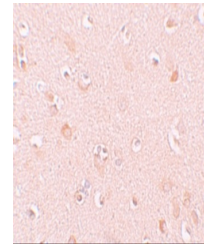
Polyclonal

Uniprot ID
P59047
NCBI
NP_703148
Dilution Range

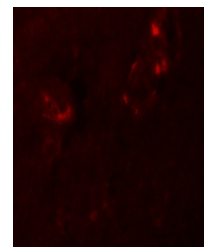
NALP5 antibody can be used for detection of NALP5 by Western blot at 1 µg/mL. Antibody can also be used for immunohistochemistry starting at 10 µg/mL. For immunofluorescence start at 20 µg/mL. Antibody validated: Western Blot in mouse samples; Immunohistochemistry in human samples and



Western blot analysis of NALP5 in mouse ...



Immunohistochemistry of NALP5 in human b...



Immunofluorescence of NALP5 in human bra...