

---

## Product Datasheet

### NANOS1 Antibody (orb1239397)

**Description**

NANOS1 Antibody

**Species/Host**

Rabbit

**Reactivity**

Human, Mouse, Rat

**Conjugation**

Unconjugated

**Tested Applications**

ELISA, IF, WB

**Immunogen**

Nanos1 antibody was raised against a 14 amino acid synthetic peptide from near the center of human Nanos1. The immunogen is located within amino acids 160 - 210 of Nanos1.

**Target**

NANOS1

**Preservatives**

Nanos1 Antibody is supplied in PBS containing 0.02% sodium azide.

**Form/Appearance**

Liquid

**Concentration**

1 mg/mL

**Storage**

Nanos1 antibody can be stored at 4°C for three months and -20°C, stable for up to one year. As with all antibodies care should be taken to avoid repeated freeze thaw cycles. Antibodies should not be exposed to prolonged high temperatures.

**Note**

For research use only

**Application notes**

Nanos1 antibody can be used for detection of Nanos1 by Western blot at 1 - 2 µg/mL. For immunofluorescence start at 20 µg/mL. Antibody validated: Western Blot in rat samples and Immunofluorescence in human samples. All other applications and species not yet tested.

**Isotype**

IgG

**Clonality**

Polyclonal

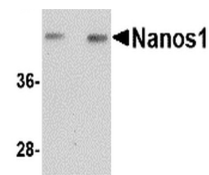
**Uniprot ID**
[Q8WY41](#)
**NCBI**
[Q8WY41](#)
**Dilution Range**

Nanos1 antibody can be used for detection of Nanos1 by Western blot at 1 - 2 µg/mL. For immunofluorescence start at 20 µg/mL. Antibody validated: Western Blot in rat samples and Immunofluorescence in human samples. All other applications and species not yet tested.

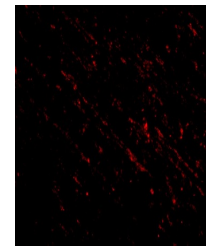
**Expiration Date**

12 months from date of receipt.

A B



Western blot analysis of Nanos1 in rat brain tissue.



Immunofluorescence of nanos1 in human brain tissue.