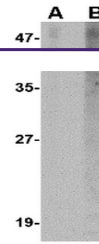
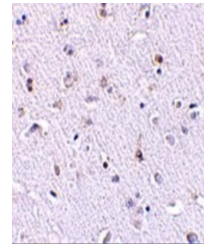

Product Datasheet

NANOS1 Antibody (orb1239396)

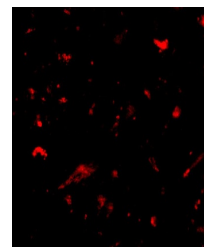
Description	NANOS1 Antibody
Species/Host	Rabbit
Reactivity	Human
Conjugation	Unconjugated
Tested Applications	ELISA, IF, IHC-P, WB
Immunogen	Nanos1 antibody was raised against a 17 amino acid synthetic peptide from near the amino terminus of human Nanos1. The immunogen is located within the first 50 amino acids of Nanos1.
Target	NANOS1
Preservatives	Nanos1 Antibody is supplied in PBS containing 0.02% sodium azide.
Form/Appearance	Liquid
Concentration	1 mg/mL
Storage	Nanos1 antibody can be stored at 4°C for three months and -20°C, stable for up to one year. As with all antibodies care should be taken to avoid repeated freeze thaw cycles. Antibodies should not be exposed to prolonged high temperatures.
Note	For research use only
Application notes	Nanos1 antibody can be used for detection of Nanos1 by Western blot at 1 µg/mL. Antibody can also be used for immunohistochemistry starting at 2.5 µg/mL. For immunofluorescence start at 20 µg/mL. Antibody validated: Western Blot in human samples; Immunohistochemistry in human samples and Immunofluorescence in human samples. All other applications and species not yet tested.
Isotype	IgG
Clonality	Polyclonal
Uniprot ID	Q8WY41
NCBI	Q8WY41
Dilution Range	Nanos1 antibody can be used for detection of Nanos1 by Western blot at 1 µg/mL. Antibody can also be used for immunohistochemistry starting at 2.5 µg/mL. For immunofluorescence start at 20 µg/mL. Antibody validated: Western Blot in human samples; Immunohistochemistry in human samples



Western blot analysis of Nanos1 in SK-N-...



Immunohistochemistry of Nanos1 in human ...



Immunofluorescence of nanos1 in human br...