

## Product Datasheet

### NANOS3 Antibody (orb1239394)

**Description**

NANOS3 Antibody

**Species/Host**

Rabbit

**Reactivity**

Human, Mouse, Rat

**Conjugation**

Unconjugated

**Tested**

ELISA, IF, IHC-P, WB

**Applications**
**Immunogen**

Nanos3 antibody was raised against a 16 amino acid synthetic peptide near the carboxy terminus of the human Nanos3. The immunogen is located within the last 50 amino acids of Nanos3.

**Target**

NANOS3

**Preservatives**

Nanos3 Antibody is supplied in PBS containing 0.02% sodium azide.

**Form/Appearance**

Liquid

**Concentration**

1 mg/mL

**Storage**

Nanos3 antibody can be stored at 4°C for three months and -20°C, stable for up to one year. As with all antibodies care should be taken to avoid repeated freeze thaw cycles. Antibodies should not be exposed to prolonged high temperatures.

**Note**

For research use only

**Application notes**

Nanos3 antibody can be used for detection of Nanos3 by Western blot at 2 µg/mL. Antibody can also be used for immunohistochemistry starting at 2.5 µg/mL. For immunofluorescence start at 20 µg/mL. Antibody validated: Western Blot in human samples; Immunohistochemistry in human samples and Immunofluorescence in human samples. All other applications and species not yet tested.

**Isotype**

IgG

**Clonality**

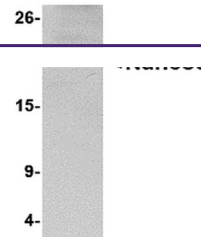
Polyclonal

**MW**

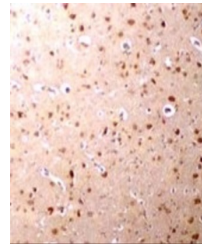
Predicted: 19 kDa Observed: 20 kDa

**Uniprot ID**
[P60323](#)
**NCBI**
[P60323](#)
**Dilution Range**

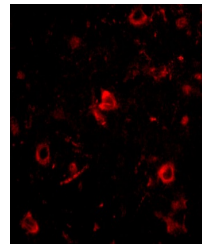
Nanos3 antibody can be used for detection of Nanos3 by Western blot at 2 µg/mL. Antibody can also be used for immunohistochemistry starting at 2.5 µg/mL. For immunofluorescence start at 20 µg/mL. Antibody validated: Western Blot in human



Western blot analysis of Nanos3 in human...



Immunohistochemistry of Nanos3 in human ...



Immunofluorescence of Nanos3 in Human Br...