

Product Datasheet

NCLN Antibody (orb1239390)

Description
NCLN Antibody
Species/Host

Rabbit

Reactivity

Human, Mouse, Rat

Conjugation

Unconjugated

Tested

ELISA, IF, IHC-P, WB

Applications
Immunogen

NCLN antibody was raised against an 18 amino acid synthetic peptide near the carboxy terminus of human NCLN. The immunogen is located within amino acids 390 - 440 of NCLN.

Target

NCLN

Preservatives

NCLN Antibody is supplied in PBS containing 0.02% sodium azide.

Form/Appearance

Liquid

Concentration

1 mg/mL

Storage

NCLN antibody can be stored at 4°C for three months and -20°C, stable for up to one year. As with all antibodies care should be taken to avoid repeated freeze thaw cycles. Antibodies should not be exposed to prolonged high temperatures.

Note

For research use only

Application notes

NCLN antibody can be used for detection of NCLN by Western blot at 0.5 µg/mL. Antibody can also be used for immunohistochemistry starting at 2.5 µg/mL. For immunofluorescence start at 2.5 µg/mL. Antibody validated: Western Blot in mouse samples; Immunohistochemistry in human samples and Immunofluorescence in human samples. All other applications and species not yet tested.

Isotype

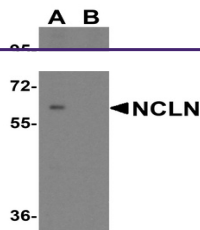
IgG

Clonality

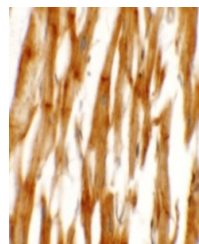
Polyclonal

Uniprot ID
Q969V3
NCBI
NP_064555
Dilution Range

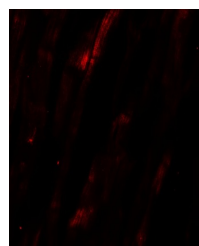
NCLN antibody can be used for detection of NCLN by Western blot at 0.5 µg/mL. Antibody can also be used for immunohistochemistry starting at 2.5 µg/mL. For immunofluorescence start at 2.5 µg/mL. Antibody validated: Western Blot in mouse samples; Immunohistochemistry in human samples and



Western blot analysis of NCLN in mouse h...



Immunohistochemistry of NCLN in human heart...



Immunofluorescence of NCLN in human heart...