
Product Datasheet

NDFIP1 Antibody (orb1239389)

Description

NDFIP1 Antibody

Species/Host

Rabbit

Reactivity

Human, Mouse

Conjugation

Unconjugated

Tested Applications

ELISA, IF, IHC-P, WB

Immunogen

NDFIP1 antibody was raised against a 19 amino acid synthetic peptide near the amino terminus of human NDFIP1. The immunogen is located within the first 50 amino acids of NDFIP1.

Target

NDFIP1

Preservatives

NDFIP1 Antibody is supplied in PBS containing 0.02% sodium azide.

Form/Appearance

Liquid

Concentration

1 mg/mL

Storage

NDFIP1 antibody can be stored at 4°C for three months and -20°C, stable for up to one year. As with all antibodies care should be taken to avoid repeated freeze thaw cycles. Antibodies should not be exposed to prolonged high temperatures.

Note

For research use only

Application notes

NDFIP1 antibody can be used for detection of NDFIP1 by Western blot at 0.5 - 1 µg/mL. Antibody can also be used for immunohistochemistry starting at 5 µg/mL. For immunofluorescence start at 20 µg/mL. Antibody validated: Western Blot in human samples; Immunohistochemistry in human samples and Immunofluorescence in human samples. All other applications and species not yet tested.

Isotype

IgG

Clonality

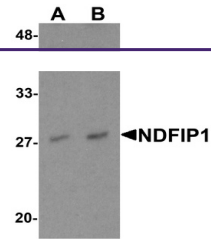
Polyclonal

MW

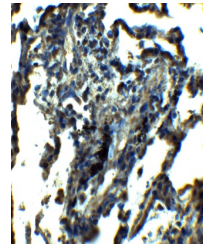
24 kDa

Uniprot ID
[Q9BT67](#)
NCBI
[NP_085048](#)
Dilution Range

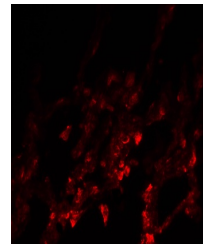
NDFIP1 antibody can be used for detection of NDFIP1 by Western blot at 0.5 - 1 µg/mL. Antibody can also be used for immunohistochemistry starting at 5 µg/mL. For immunofluorescence start at 20 µg/mL. Antibody validated: Western Blot in human



Western blot analysis of NDFIP1 in PC-3 ...



Immunohistochemistry of NDFIP1 in human ...



Immunofluorescence of NDFIP1 in human lu...