

---

## Product Datasheet

### GABARAPL2 Antibody (orb1239387)

**Description**

GABARAPL2 Antibody

**Species/Host**

Rabbit

**Reactivity**

Human, Mouse, Rat

**Conjugation**

Unconjugated

**Tested Applications**

ELISA, IF, IHC-P, WB

**Immunogen**

GABARAPL2 antibody was raised against a 15 amino acid peptide near the carboxy terminus of human GABARAPL2. The immunogen is located within the last 50 amino acids of GABARAPL2.

**Target**

GABARAPL2

**Preservatives**

GABARAPL2 antibody is supplied in PBS containing 0.02% sodium azide.

**Form/Appearance**

Liquid

**Concentration**

1 mg/mL

**Storage**

GABARAPL2 antibody can be stored at 4°C for three months and -20°C, stable for up to one year.

**Note**

For research use only

**Application notes**

GABARAPL2 antibody can be used for detection of GABARAPL2 by Western blot at 1 - 2 µg/ml. Antibody can also be used for Immunohistochemistry at 5 µg/mL. For Immunofluorescence start at 20 µg/mL. Antibody validated: Western Blot in human samples; Immunohistochemistry in mouse and rat samples and Immunofluorescence in mouse and rat samples. All other applications and species not yet tested.

**Isotype**

IgG

**Clonality**

Polyclonal

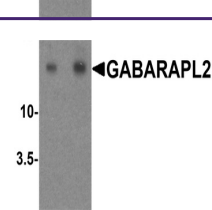
**MW**

Predicted: 13 kDa Observed: 13 kDa

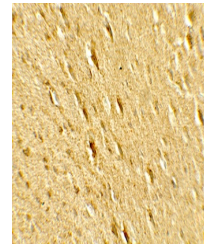
**Uniprot ID**
[P60520](#)
**NCBI**
[NP\\_009216](#)
**Dilution Range**

GABARAPL2 antibody can be used for detection of GABARAPL2 by Western blot at 1 - 2 µg/ml. Antibody can also be used for Immunohistochemistry at 5 µg/mL. For Immunofluorescence start at 20 µg/mL. Antibody validated: Western Blot in human samples;

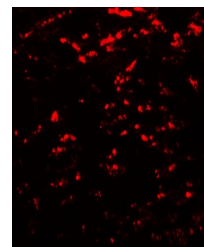
A B



Western blot analysis of GABARAPL2 in hu...



Immunohistochemistry of GABARAPL2 in rat...



Immunofluorescence of GABARAPL2 in rat b...