
Product Datasheet

NENF Antibody (orb1239386)

Description

NENF Antibody

Species/Host

Rabbit

Reactivity

Human, Mouse, Rat

Conjugation

Unconjugated

Tested Applications

ELISA, IF, IHC-P, WB

Immunogen

NENF antibody was raised against a 15 amino acid synthetic peptide from near the carboxy terminus of human NENF. The immunogen is located within the last 50 amino acids of NENF.

Target

NENF

Preservatives

NENF Antibody is supplied in PBS containing 0.02% sodium azide.

Form/Appearance

Liquid

Concentration

1 mg/mL

Storage

NENF antibody can be stored at 4°C for three months and -20°C, stable for up to one year. As with all antibodies care should be taken to avoid repeated freeze thaw cycles. Antibodies should not be exposed to prolonged high temperatures.

Note

For research use only

Application notes

NENF antibody can be used for detection of NENF by Western blot at 1 - 2 µg/mL. Despite its predicted molecular weight of ~20kDa, NENF is observed at 37 kDa in SDS-PAGE. Antibody can also be used for immunohistochemistry starting at 10 µg/mL. For immunofluorescence start at 20 µg/mL. Antibody validated: Western Blot in human samples; Immunohistochemistry in rat samples and Immunofluorescence in rat samples. All other applications and species not yet tested.

Isotype

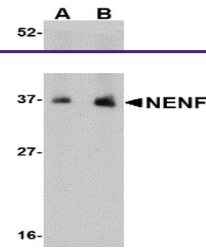
IgG

Clonality

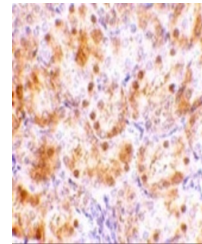
Polyclonal

Uniprot ID
[Q9UMX5](#)
NCBI
[NP_037481](#)
Dilution Range

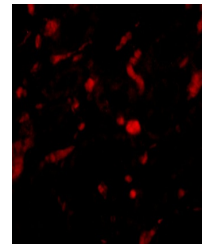
NENF antibody can be used for detection of NENF by Western blot at 1 - 2 µg/mL. Despite its predicted molecular weight of ~20kDa, NENF is observed at 37 kDa in SDS-PAGE. Antibody can also be used for



Western blot analysis of NENF in human k...



Immunohistochemistry of NENF in rat kid...



Immunofluorescence of NENF in rat kidney...