
Product Datasheet

CFLAR Antibody (orb1239384)

Description

CFLAR Antibody

Species/Host

Rabbit

Reactivity

Human

Conjugation

Unconjugated

Tested

ELISA, ICC, IF, WB

Applications
Immunogen

FLIP antibody was raised against a 19 amino acid peptide near the carboxy terminus of human FLIP. The immunogen is located within amino acids 180 - 230 of FLIP.

Target

CFLAR

Preservatives

FLIP Antibody is supplied in PBS containing 0.02% sodium azide.

Form/Appearance

Liquid

Concentration

1 mg/ml

Storage

FLIP antibody can be stored at 4°C for three months and -20°C, stable for up to one year. As with all antibodies care should be taken to avoid repeated freeze thaw cycles. Antibodies should not be exposed to prolonged high temperatures.

Note

For research use only

Application notes

FLIP can be used for detection of FLIP by Western blot at 1:1000 dilution. 35 kDa and 25 kDa bands can be detected. Antibody can also be used for immunocytochemistry starting at 2 µg/mL. For immunofluorescence start at 10 µg/mL. Antibody validated: Western Blot in human and mouse samples; Immunocytochemistry in human samples and Immunofluorescence in human samples. All other applications and species not yet tested.

Isotype

IgG

Clonality

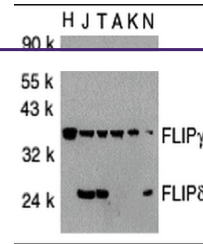
Polyclonal

MW

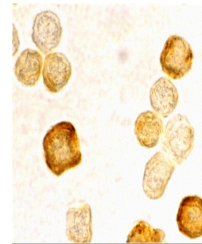
35 kDa and 25 kDa

Uniprot ID
[O15519](#)
NCBI
[AAC51622](#)
Dilution Range

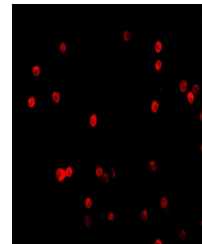
FLIP can be used for detection of FLIP by Western blot at 1:1000 dilution. 35 kDa and 25 kDa bands can be detected. Antibody can also be used for immunocytochemistry starting at 2 µg/mL. For



Western blot analysis of FLIP in total c...



Immunocytochemistry staining of HeLa cel...



Immunofluorescence of FLIP in HeLa cells...