

---

## Product Datasheet

### DRAXIN Antibody (orb1239382)

**Description**

DRAXIN Antibody

**Species/Host**

Rabbit

**Reactivity**

Human, Mouse, Rat

**Conjugation**

Unconjugated

**Tested Applications**

ELISA, IF, IHC-P, WB

**Immunogen**

Neucrin antibody was raised against a 17 amino acid synthetic peptide near the carboxy terminus of human Neucrin. The immunogen is located within the last 50 amino acids of NEUCRIN.

**Target**

DRAXIN

**Preservatives**

NEUCRIN Antibody is supplied in PBS containing 0.02% sodium azide.

**Form/Appearance**

Liquid

**Concentration**

1 mg/mL

**Storage**

NEUCRIN antibody can be stored at 4°C for three months and -20°C, stable for up to one year. As with all antibodies care should be taken to avoid repeated freeze thaw cycles. Antibodies should not be exposed to prolonged high temperatures.

**Note**

For research use only

**Application notes**

Neucrin antibody can be used for detection of Neucrin by Western blot at 1 µg/mL. Antibody can also be used for immunohistochemistry starting at 5 µg/mL. For immunofluorescence start at 20 µg/mL. Antibody validated: Western Blot in rat samples; Immunohistochemistry in mouse samples and Immunofluorescence in mouse samples. All other applications and species not yet tested.

**Isotype**

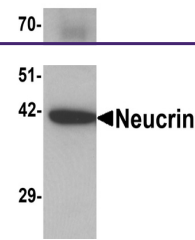
IgG

**Clonality**

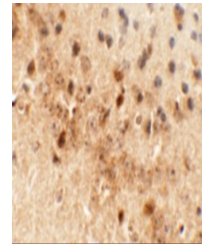
Polyclonal

**Uniprot ID**
[Q8NBI3](#)
**NCBI**
[BAG80561](#)
**Dilution Range**

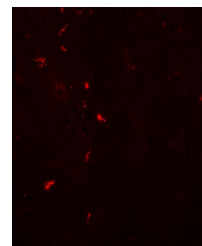
Neucrin antibody can be used for detection of Neucrin by Western blot at 1 µg/mL. Antibody can also be used for immunohistochemistry starting at 5 µg/mL. For immunofluorescence start at 20 µg/mL. Antibody validated: Western Blot in rat samples; Immunohistochemistry in mouse samples



Western blot analysis of Neucrin in rat ...



Immunohistochemistry of NEUCRIN in mouse...



Immunofluorescence of NEUCRIN in mouse b...