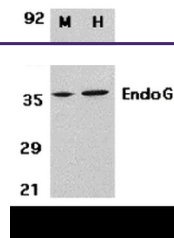
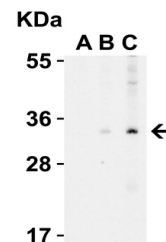

Product Datasheet

ENDOG Antibody (orb1239381)

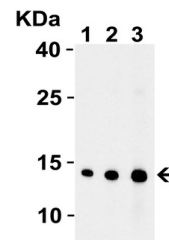
Description	ENDO G Antibody
Species/Host	Rabbit
Reactivity	Human, Mouse, Rat
Conjugation	Unconjugated
Tested Applications	ELISA, IF, IHC-P, WB
Immunogen	Anti-EndoG antibody (orb1239381) was raised against a peptide corresponding to 15 amino acids near the amino terminus of human ENDOG. The immunogen is located within amino acids 40-90 of EndoG.
Target	ENDO G
Preservatives	EndoG Antibody is supplied in PBS containing 0.02% sodium azide.
Form/Appearance	Liquid
Concentration	1 mg/mL
Storage	EndoG antibody can be stored at 4°C up to one year. Antibodies should not be exposed to prolonged high temperatures.
Note	For research use only
Isotype	IgG
Clonality	Polyclonal
MW	Predicted: 33kD Observed: 33kD
Uniprot ID	Q14249
NCBI	NP_004426
Dilution Range	WB: 0.5-2 µg/mL; IF: 20 µg/mL; IHC: 2.5-15 µg/mL. Antibody validated: Western Blot in human and mouse samples; Immunofluorescence and Immunohistochemistry in human samples. All other applications and species not yet tested.
Expiration Date	12 months from date of receipt.



Western Blot Validation in Mouse 3T3 (M)...



Western Blot Validation in Human A431 Ce...



Western Blot Validation with Recombinant...