

---

## Product Datasheet

### PRSS12 Antibody (orb1239380)

**Description**

PRSS12 Antibody

**Species/Host**

Rabbit

**Reactivity**

Human, Mouse, Rat

**Conjugation**

Unconjugated

**Tested Applications**

ELISA, IF, IHC-P, WB

**Immunogen**

Neurotrypsin antibody was raised against a 23 amino acid synthetic peptide from near the amino terminus of human neurotrypsin. The immunogen is located within amino acids 110 - 160 of Neurotrypsin.

**Target**

PRSS12

**Preservatives**

Neurotrypsin Antibody is supplied in PBS containing 0.02% sodium azide.

**Form/Appearance**

Liquid

**Concentration**

1 mg/mL

**Storage**

Neurotrypsin antibody can be stored at 4°C for three months and -20°C, stable for up to one year. As with all antibodies care should be taken to avoid repeated freeze thaw cycles. Antibodies should not be exposed to prolonged high temperatures.

**Note**

For research use only

**Application notes**

Neurotrypsin antibody can be used for detection of neurotrypsin by Western blot at 0.5 - 2 µg/mL. Antibody can also be used for immunohistochemistry starting at 2.5 µg/mL. For immunofluorescence start at 20 µg/mL. Antibody validated: Western Blot in mouse samples; Immunohistochemistry in human samples and Immunofluorescence in human samples. All other applications and species not yet tested.

**Isotype**

IgG

**Clonality**

Polyclonal

**MW**

Predicted: 96 kDa Observed: 96 kDa

**Uniprot ID**

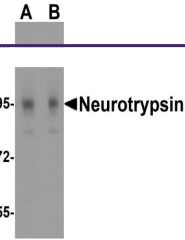
[P56730](#)

**NCBI**

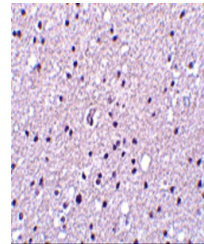
[CAA04816](#)

**Dilution Range**

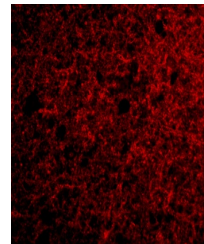
Neurotrypsin antibody can be used for detection of neurotrypsin by Western blot at 0.5 - 2 µg/mL. Antibody can also be used for



Western blot analysis of neurotrypsin in...



Immunohistochemistry of Neurotrypsin in ...



Immunofluorescence of Neurotrypsin in Hu...