
Product Datasheet

DRAM1 Antibody (orb1239379)

Description

DRAM1 Antibody

Species/Host

Rabbit

Reactivity

Human, Mouse, Rat

Conjugation

Unconjugated

Tested

ELISA, IF, IHC-P, WB

Applications
Immunogen

Anti-DRAM antibody (orb1239379) was raised against a peptide corresponding to 16 amino acids near the carboxy terminus of human DRAM. The immunogen is located within amino acids 170-220 of DRAM.

Target

DRAM1

Preservatives

DRAM Antibody is supplied in PBS containing 0.02% sodium azide.

Form/Appearance

Liquid

Concentration

1 mg/mL

Storage

DRAM antibody can be stored at 4°C for three months and -20°C, stable for up to one year. As with all antibodies care should be taken to avoid repeated freeze thaw cycles. Antibodies should not be exposed to prolonged high temperatures.

Note

For research use only

Isotype

IgG

Clonality

Polyclonal

MW

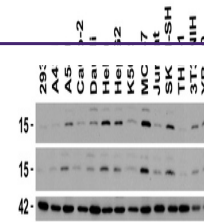
Predicted: 14kD, 26kD Observed: 14 kD, 26kD

Uniprot ID
[Q8N682](#)
NCBI
[AAH18435](#)
Dilution Range

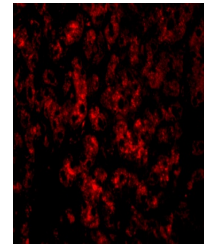
WB: 1 µg/mL; IF: 20 µg/mL; IHC: 2.5 µg/mL. Antibody validated: Western Blot in human, mouse and rat samples, Immunofluorescence and Immunohistochemistry in human samples. All other applications and species not yet tested.

Expiration Date

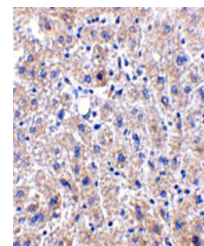
12 months from date of receipt.



Independent Antibody Validation (IAV) vi...



Immunofluorescence Validation of DRAM in...



Immunohistochemistry Validation of DRAM ...