
Product Datasheet

NBN Antibody (orb1239373)

Description

NBN Antibody

Species/Host

Rabbit

Reactivity

Human, Mouse, Rat

Conjugation

Unconjugated

Tested Applications

ELISA, IF, IHC-P, WB

Immunogen

NIBRIN antibody was raised against a 16 amino acid synthetic peptide near the amino terminus of human NIBRIN. The immunogen is located within amino acids 50 - 100 of NIBRIN.

Target

NBN

Preservatives

NIBRIN Antibody is supplied in PBS containing 0.02% sodium azide.

Form/Appearance

Liquid

Concentration

1 mg/mL

Storage

NIBRIN antibody can be stored at 4°C for three months and -20°C, stable for up to one year. As with all antibodies care should be taken to avoid repeated freeze thaw cycles. Antibodies should not be exposed to prolonged high temperatures.

Note

For research use only

Application notes

NIBRIN antibody can be used for detection of NIBRIN by Western blot at 1 - 2 µg/mL. Antibody can also be used for immunohistochemistry starting at 2.5 µg/mL. For immunofluorescence start at 5 µg/mL. Antibody validated: Western Blot in rat samples; Immunohistochemistry in human samples and Immunofluorescence in human samples. All other applications and species not yet tested.

Isotype

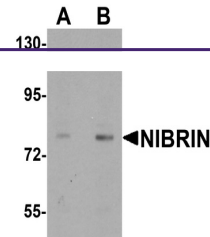
IgG

Clonality

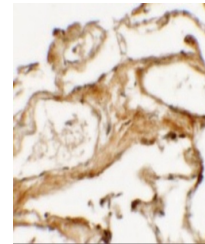
Polyclonal

Uniprot ID
[O60934](#)
NCBI
[NP_002476](#)
Dilution Range

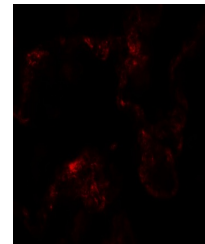
NIBRIN antibody can be used for detection of NIBRIN by Western blot at 1 - 2 µg/mL. Antibody can also be used for immunohistochemistry starting at 2.5 µg/mL. For immunofluorescence start at 5 µg/mL. Antibody validated: Western Blot in rat samples; Immunohistochemistry in human samples and



Western blot analysis of NIBRIN in rat I...



Immunohistochemistry of NIBRIN (NT) in h...



Immunofluorescence of NIBRIN in human lu...