

---

## Product Datasheet

### DRAM1 Antibody (orb1239371)

**Description**

DRAM1 Antibody

**Species/Host**

Rabbit

**Reactivity**

Human, Mouse, Rat

**Conjugation**

Unconjugated

**Tested Applications**

ELISA, IF, IHC-P, WB

**Immunogen**

Anti-DRAM antibody (orb1239371) was raised against a peptide corresponding to 16 amino acids near the amino terminus of human DRAM. The immunogen is located within amino acids 30-80 of DRAM.

**Target**

DRAM1

**Preservatives**

DRAM Antibody is supplied in PBS containing 0.02% sodium azide.

**Form/Appearance**

Liquid

**Concentration**

1 mg/mL

**Storage**

DRAM antibody can be stored at 4°C for three months and -20°C, stable for up to one year. As with all antibodies care should be taken to avoid repeated freeze thaw cycles. Antibodies should not be exposed to prolonged high temperatures.

**Note**

For research use only

**Isotype**

IgG

**Clonality**

Polyclonal

**MW**

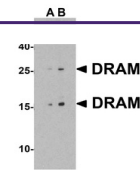
Predicted: 14kD, 26kD Observed: 14 kD, 26kD

**Uniprot ID**
[Q8N682](#)
**NCBI**
[AAH18435](#)
**Dilution Range**

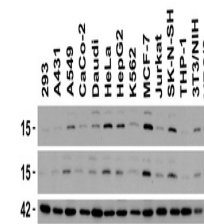
WB: 1-2 µg/mL; IF: 20 µg/mL; IHC: 2-2.5 µg/mL. Antibody validated: Western Blot in human mouse and rat samples; Immunofluorescence and Immunohistochemistry in human and mouse samples. All other applications and species not yet tested.

**Expiration Date**

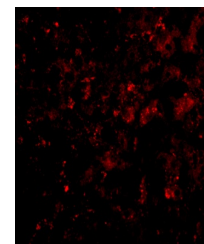
12 months from date of receipt.



Western Blot Validation in Human 293 Cel...



Independent Antibody Validation (IAV) vi...



Immunofluorescence Validation of DRAM in...