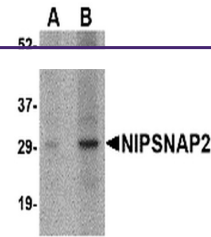
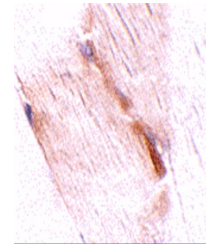

Product Datasheet

GBAS Antibody (orb1239367)

Description	GBAS Antibody
Species/Host	Rabbit
Reactivity	Human, Mouse, Rat
Conjugation	Unconjugated
Tested Applications	ELISA, IHC-P, WB
Immunogen	NIPSNAP2 antibody was raised against a 14 amino acid synthetic peptide near the center of human NIPSNAP2. The immunogen is located within the first 50 amino acids of NIPSNAP2.
Target	GBAS
Preservatives	NIPSNAP2 Antibody is supplied in PBS containing 0.02% sodium azide.
Form/Appearance	Liquid
Concentration	1 mg/mL
Storage	NIPSNAP2 antibody can be stored at 4°C for three months and -20°C, stable for up to one year. As with all antibodies care should be taken to avoid repeated freeze thaw cycles. Antibodies should not be exposed to prolonged high temperatures.
Note	For research use only
Application notes	NIPSNAP2 antibody can be used for detection of NIPSNAP2 by Western blot at 1 - 2 µg/mL. Antibody can also be used for immunohistochemistry starting at 2.5 µg/mL. Antibody validated: Western Blot in human samples and Immunohistochemistry in mouse samples. All other applications and species not yet tested.
Isotype	IgG
Clonality	Polyclonal
Uniprot ID	O75323
NCBI	O75323
Dilution Range	NIPSNAP2 antibody can be used for detection of NIPSNAP2 by Western blot at 1 - 2 µg/mL. Antibody can also be used for immunohistochemistry starting at 2.5 µg/mL. Antibody validated: Western Blot in human samples and Immunohistochemistry in mouse samples. All other applications and species not yet tested.



Western blot analysis of NIPSNAP2 in hum...



Immunohistochemistry of NIPSNAP2 in mous...